

# Contents

Read me First .....	2
■ Introduction .....	2
■ Copyrights .....	2
■ Disclaimer.....	2
Start and Login .....	3
■ J2534 start .....	3
■ J2534 Login.....	4
■ J2534 Logout.....	4
Lay out.....	5
■ Main screen .....	5
Internet update .....	6
■ Internet update.....	6
Setting.....	8
■ Setting .....	8
Vehicle selection .....	10
■ Vehicle selection .....	10
Fault Code Searching.....	12
■ Fault Code Searching.....	12
DTC Analysis.....	15
■ DTC Analysis.....	15
Data Analysis.....	19
■ Data Analysis .....	19
Actuation Test .....	22
■ Actuation Test.....	22
ECU Infomation.....	24
■ ECU Infomation .....	24

## ■ Introduction

Thank you for purchasing J2534.

Read the instructions thoroughly for proper operation of your J2534

## ■ Copyrights

This Manual is copyrighted by Global Information Technology Co., Ltd. All rights reserved. No part of this manual may be reproduced in any form without the prior written permission of Global Information Technology Co., Ltd.

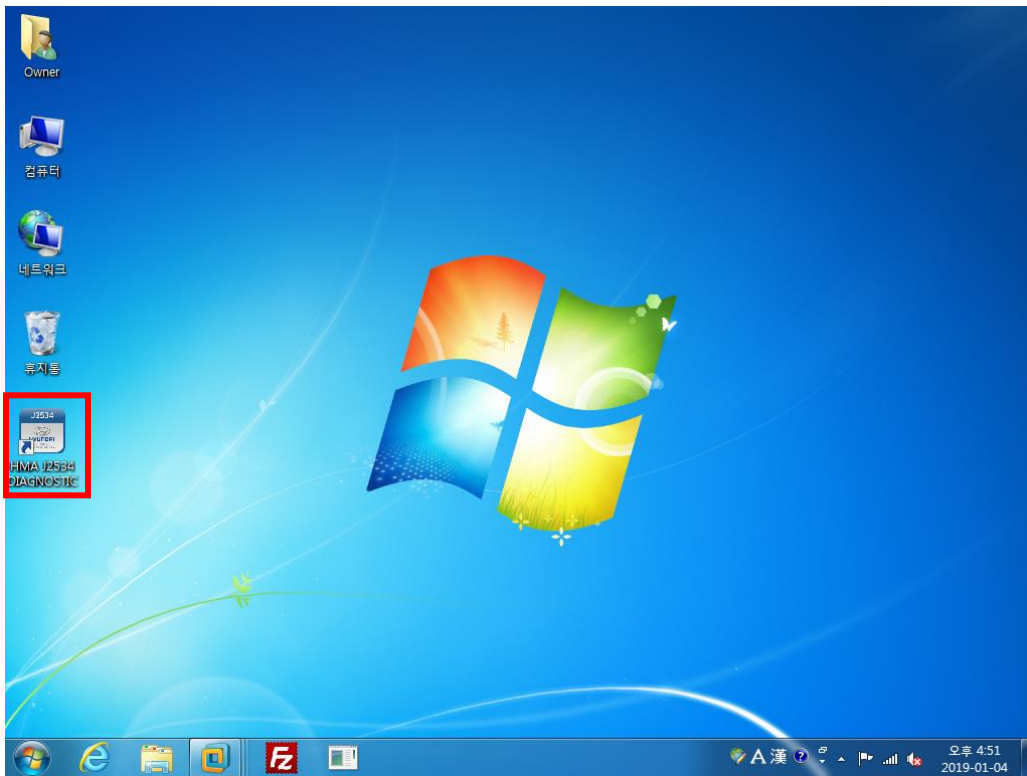
© 2019 Global Information Technology Co., LTD. All Right Reserved.

## ■ Disclaimer

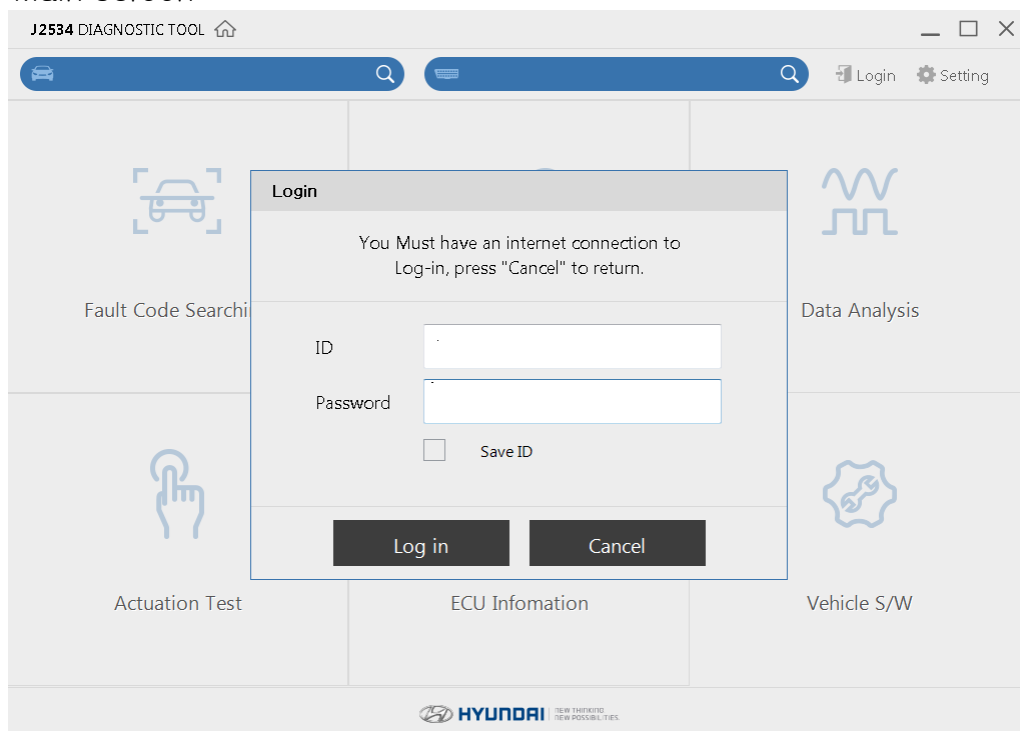
- The product specification and manual are subject to change without notice.
- GIT(Global Information Technology Co., LTD) is not responsible for any problems caused by installation of other unrecommended programs or changes to J2534 program.
- J2534 program is updated on the internet when there is any update, so please keep it up to date for the proper use.
- J2534 program supports to check diagnostic trouble code of vehicle through communication with ECU(Electronic Control Unit). It may not be able to display accurate data depending on the condition of vehicle and communication situation. The method of vehicle diagnosis and repair should be decided according to the judgment of the user at the end, and the manufacturer and the seller are not responsible for the result of the diagnosis and repair method.

## J2534 start

- After J2534 software installation, double-click the short cut on the background for J2534 start.

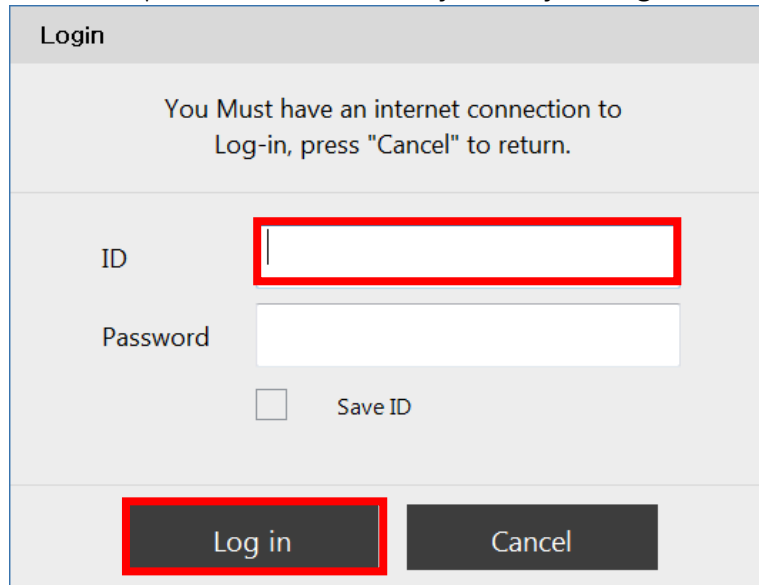


## J2534 Main screen



## J2534 Login

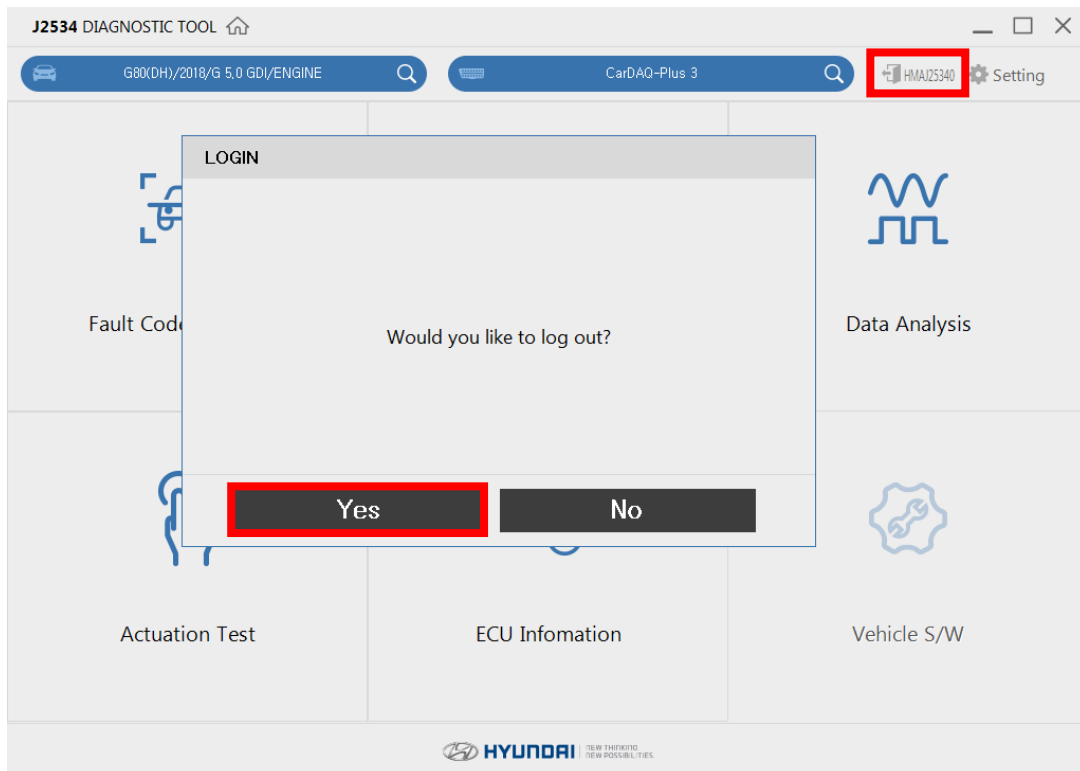
- When you start J2534, you will see the Login window. Try to login with ID and password which are provided by program administrator. And then, main window of J2534 will be opened. Check the Save ID item if you want to remember the last login information.
- J2534 program will be updated automatically after you login.



If you use J2534 program without login, you will not be able to use other functions except Setting.

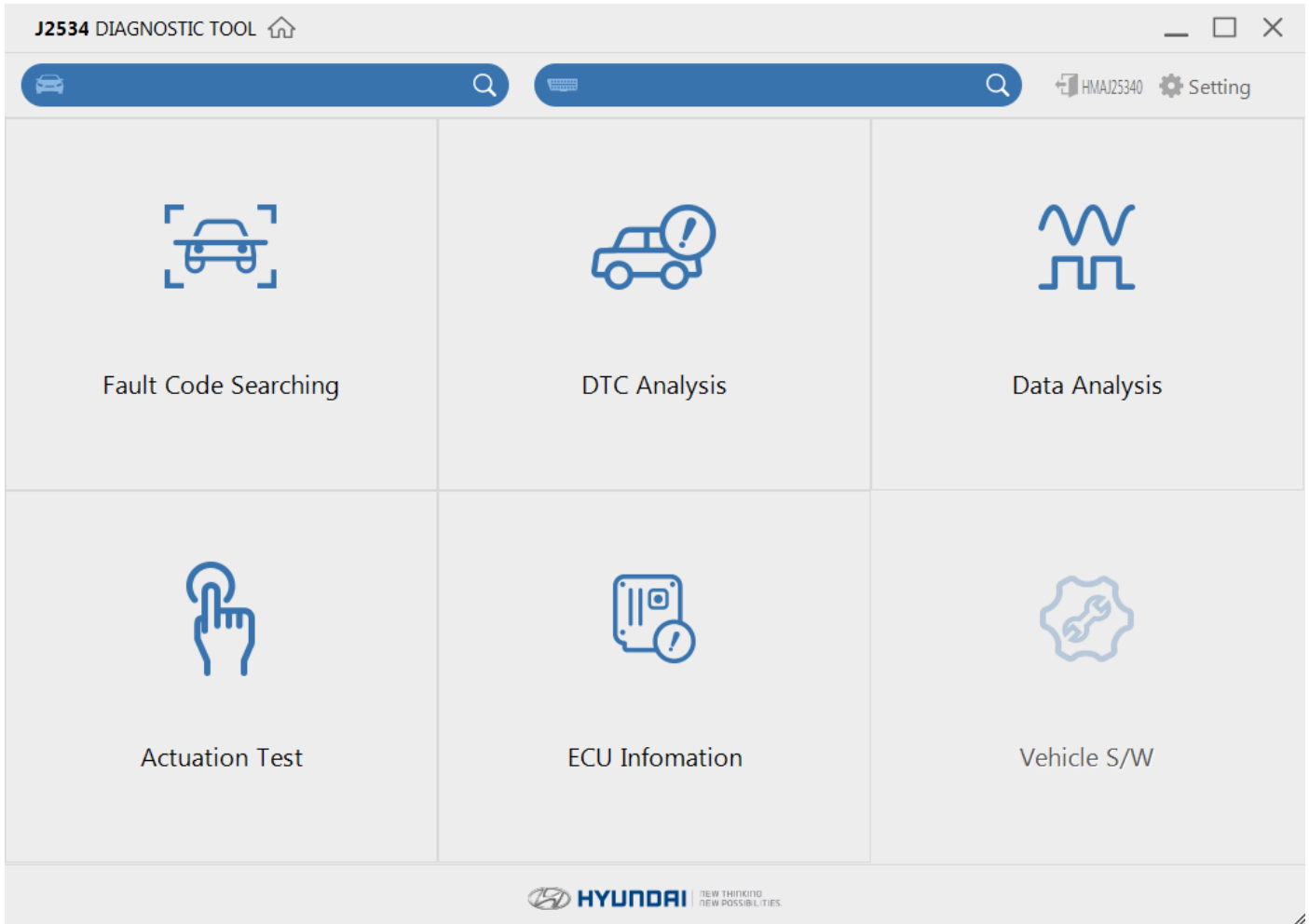
## J2534 Logout

- Click top right icon on the J2534 program of main screen to logout as the picture below.



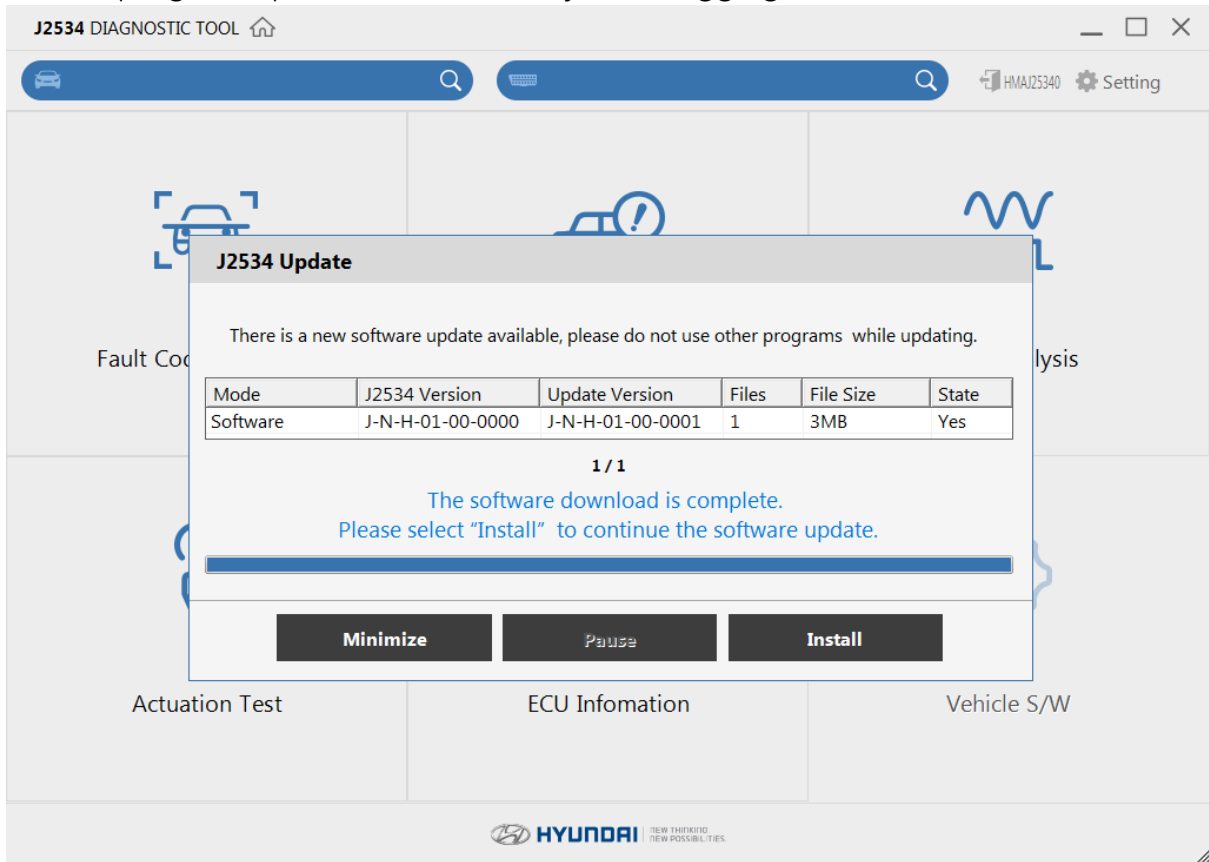
## ■ Main screen

- Main page of J2534 is consisted of several items to be used J2534 program.
- The composition of the main screen is divided by six items which are Fault Code Searching, DTC Analysis, Data Analysis, Actuation Test, ECU Information, and Vehicle S/W. The functions will be working by clicking on the each section.
- J2534 program supports 1024\*768 resolution, and the program is based on internet. If the internet is not connected, J2535 program will be not working properly.

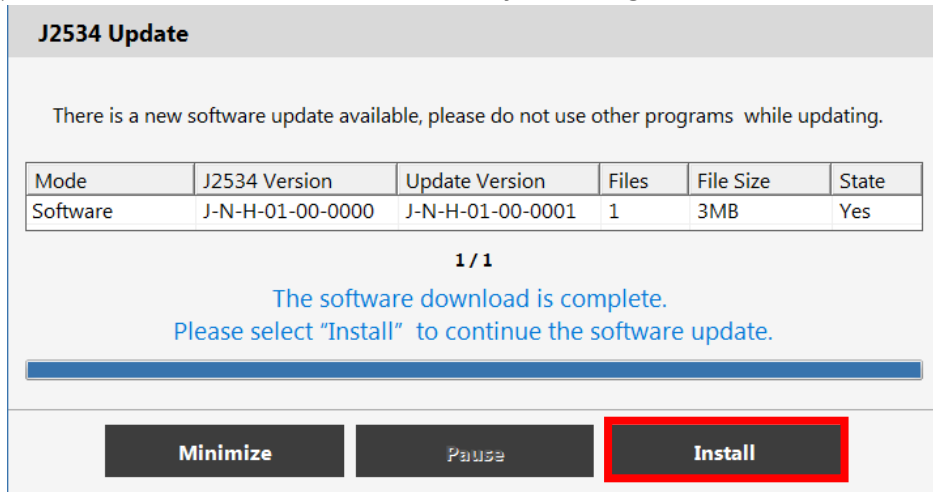


## Internet update

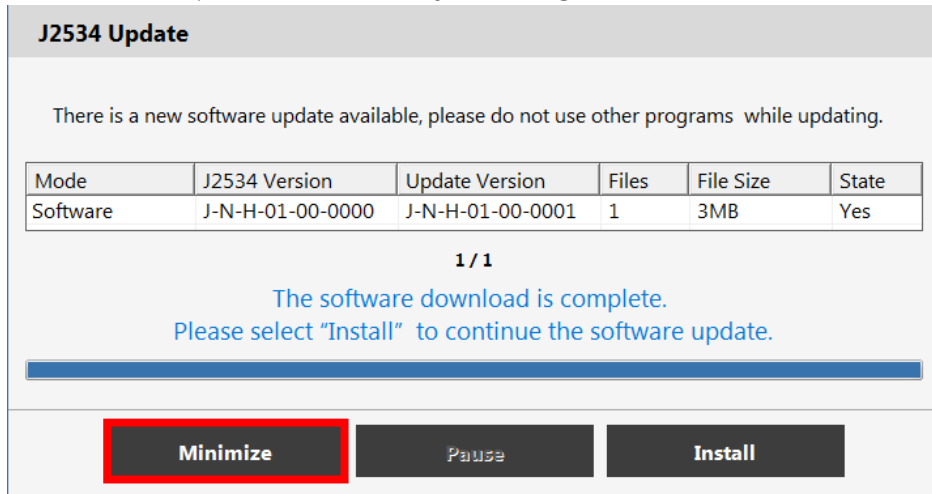
- J2534 program updates automatically after logging in.



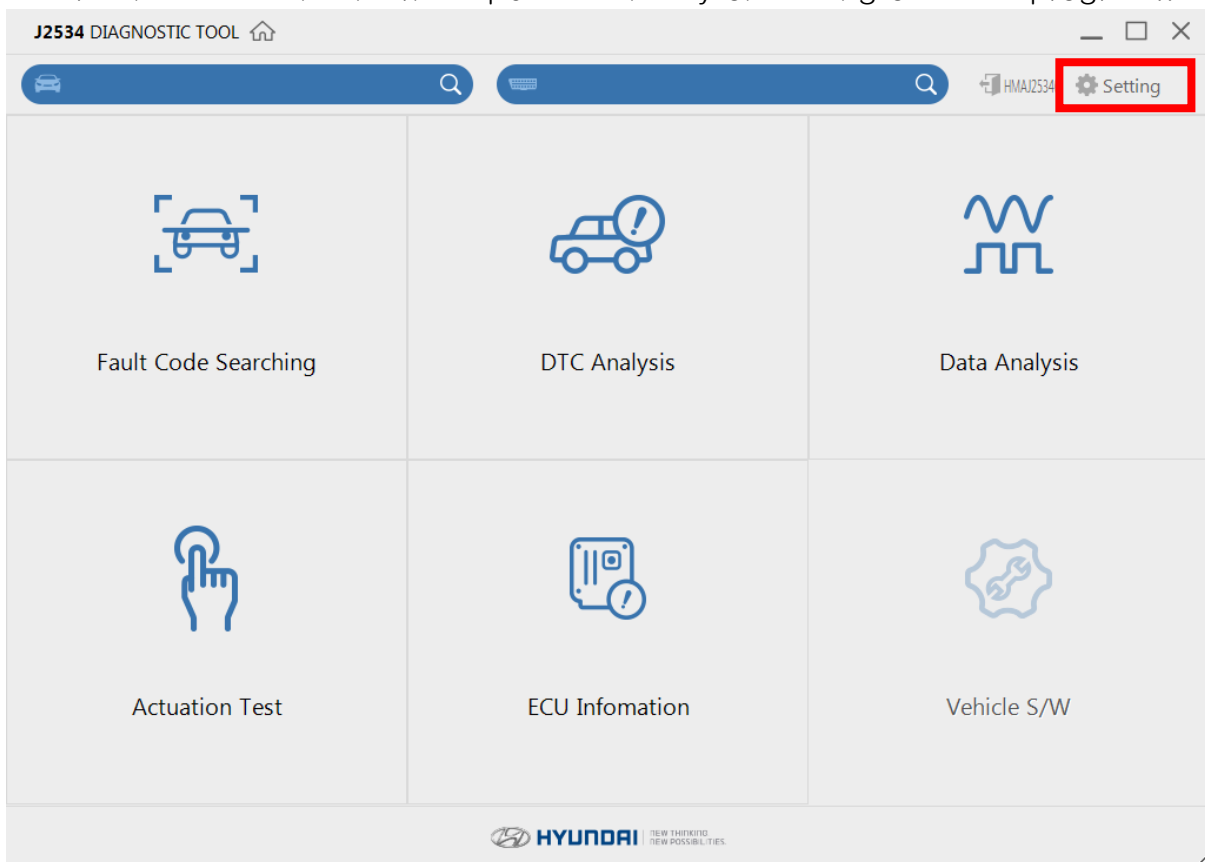
- Internet update installation will be started by clicking 'Install' button.



- Minimize the internet update window by clicking 'Minimize' button.

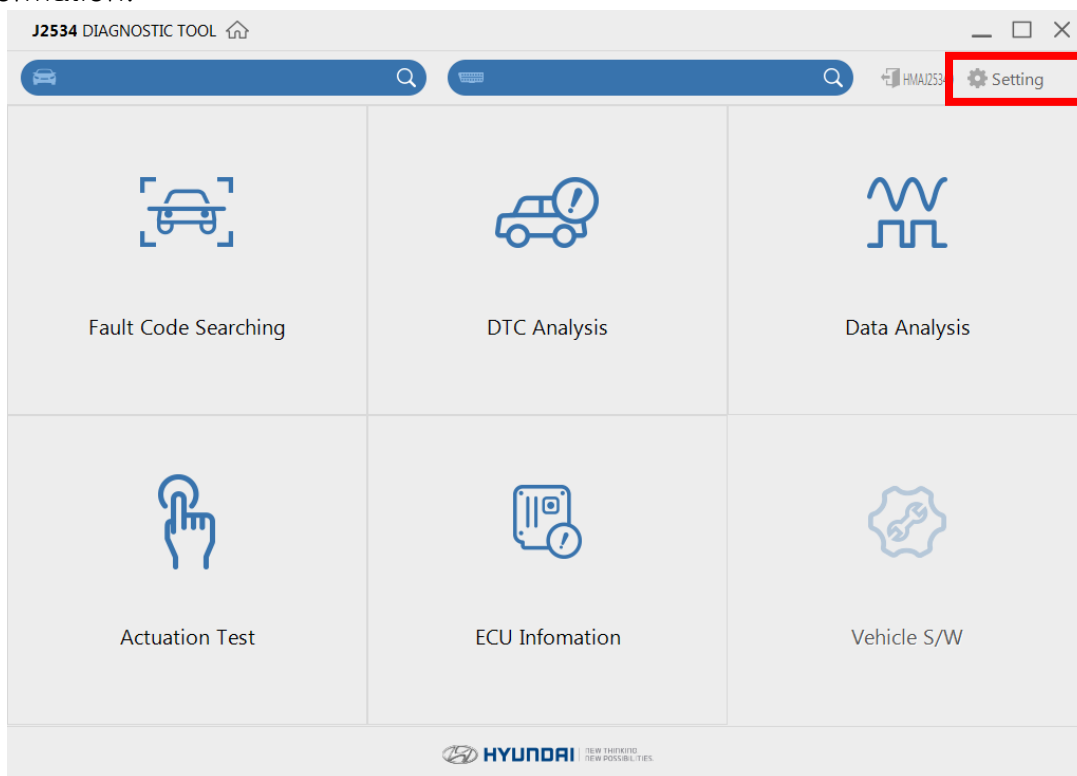


- User can execute the internet update manually on Setting of J2534 program..



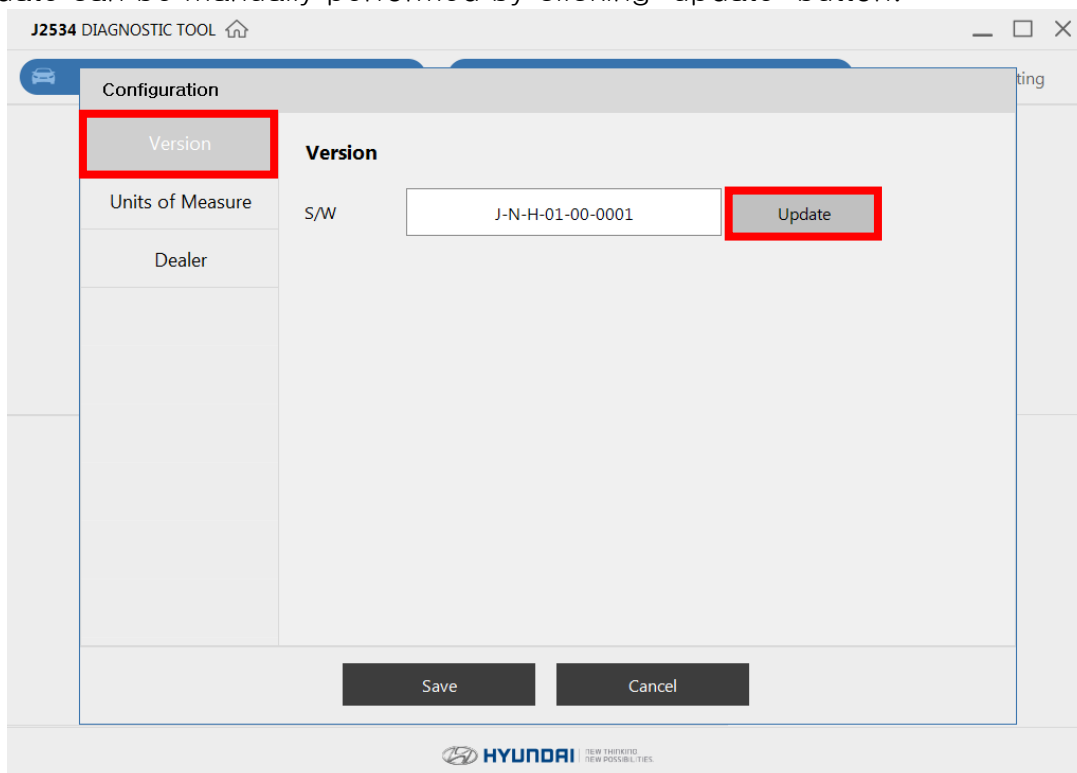
## Setting

- Setting provides update version, internet update, changing units, and dealer information.



## Version

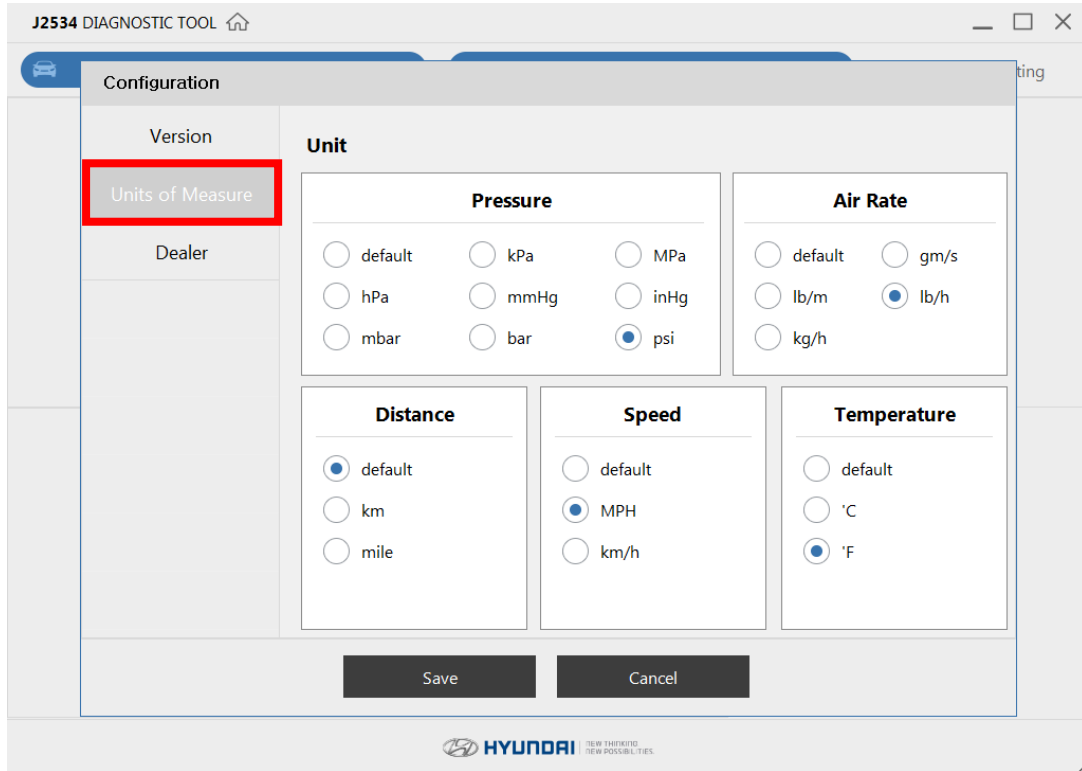
Displays update version related to vehicle diagnostic function. The latest internet update can be manually performed by clicking 'update' button.





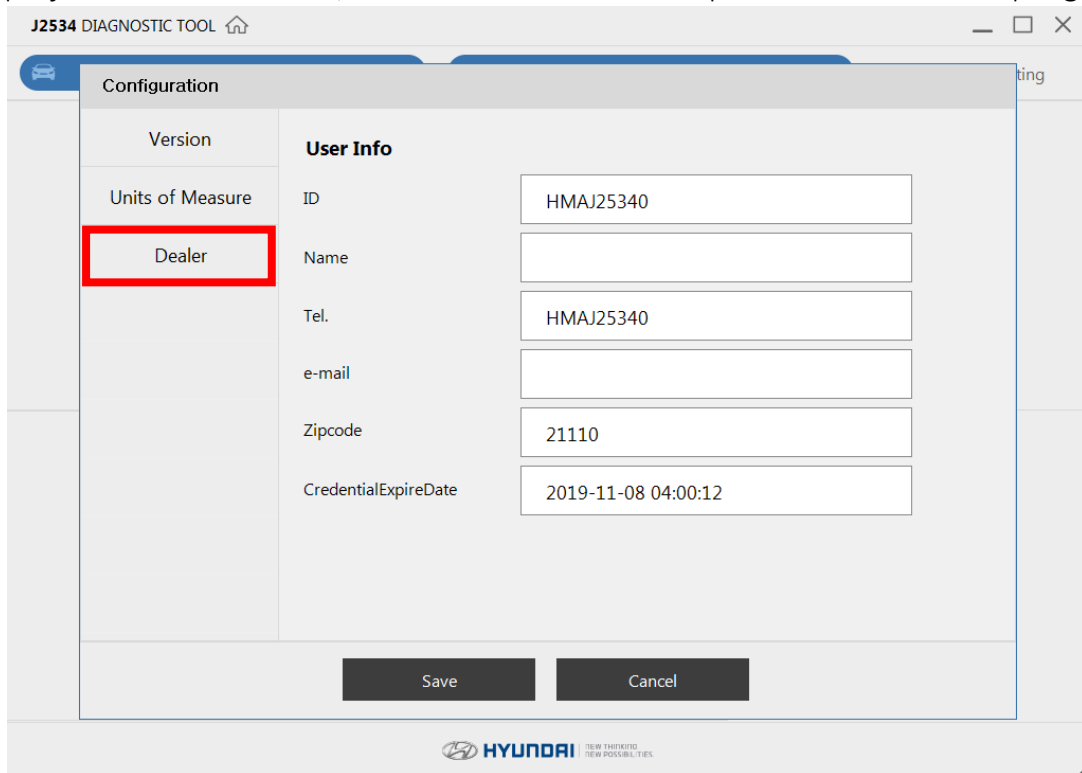
- Units of Measure

Provides units of sensor data. The default setting unit displays the unit set by ECU directly without converting it into the J2534 program.



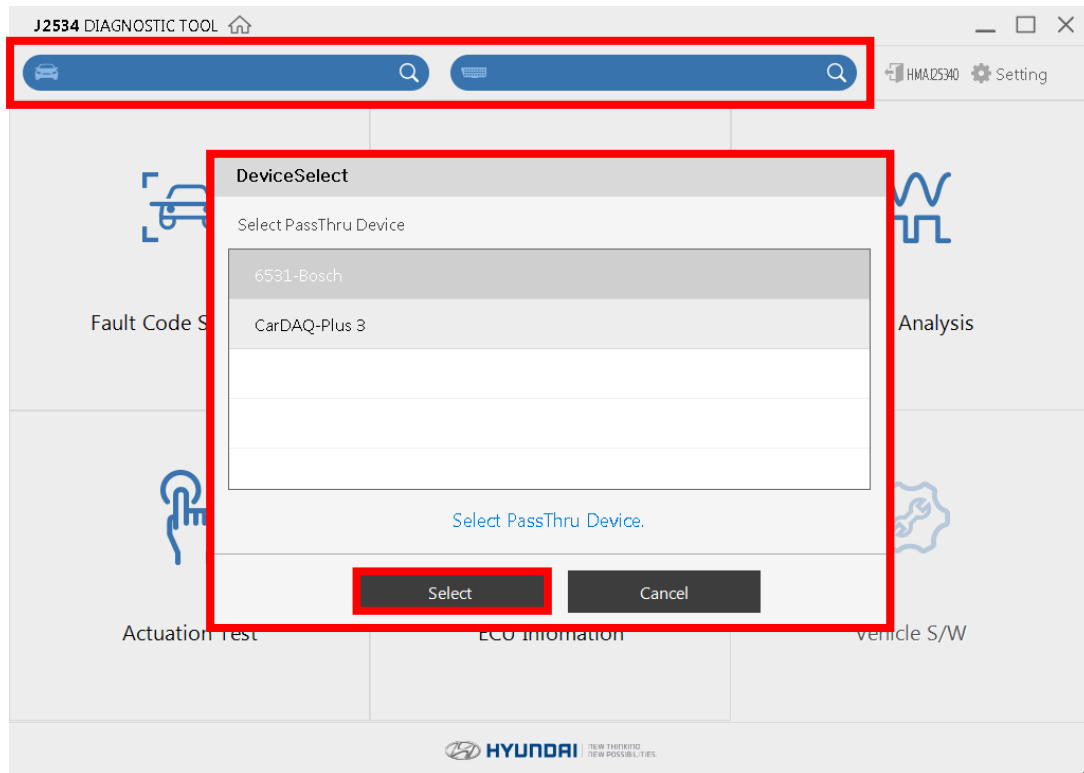
- Dealer

Displays user information, and can be checked expired date of J2534 program.

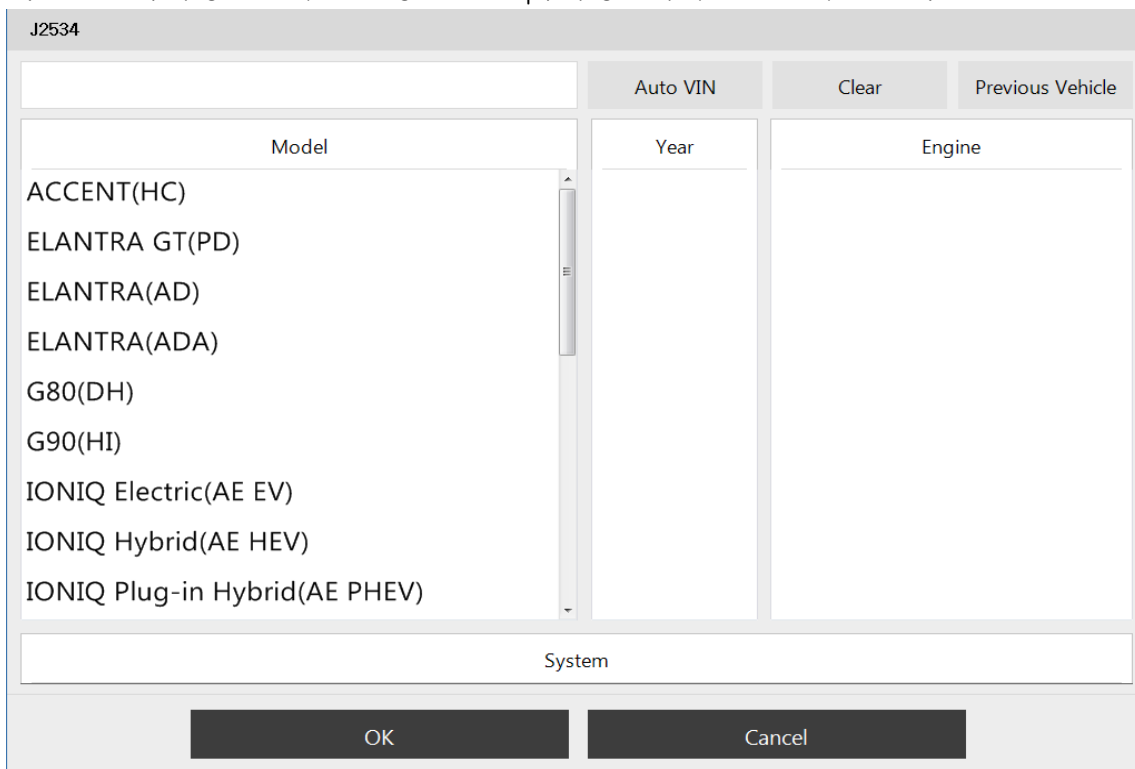


## Vehicle selection

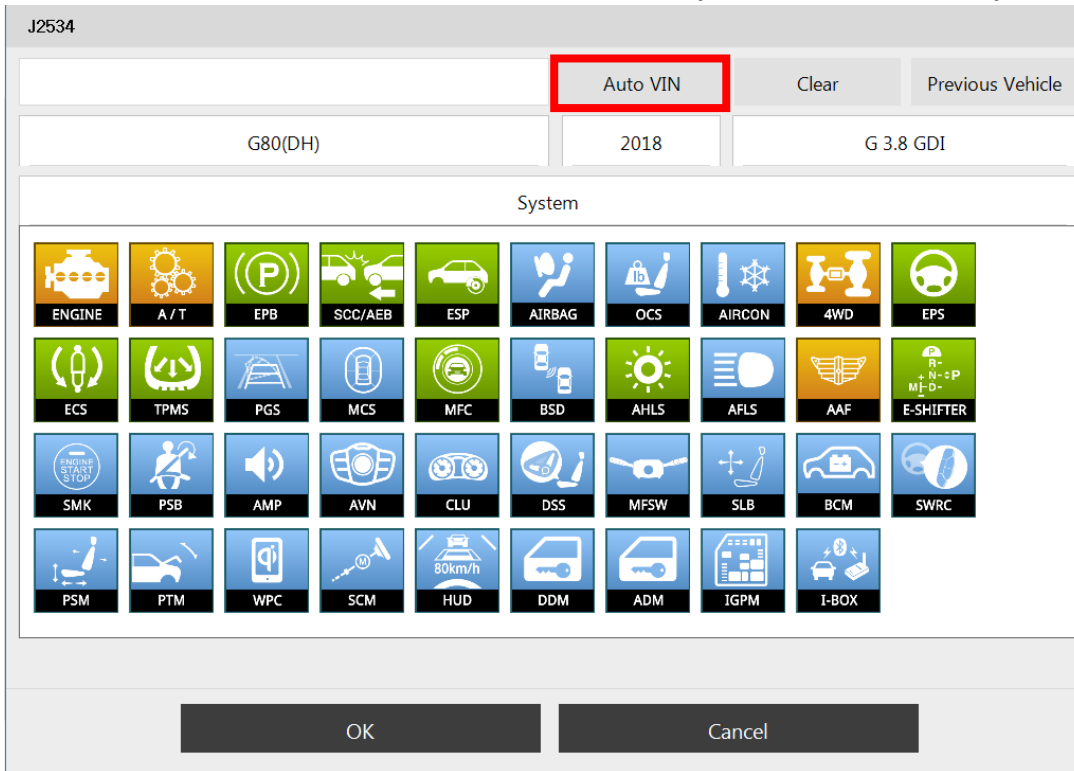
- When clicking the magnifying glass icon on the top of J2534 main screen, 'Device Select' pop-up appears. Then, the device you are willing to use can be selected or canceled.



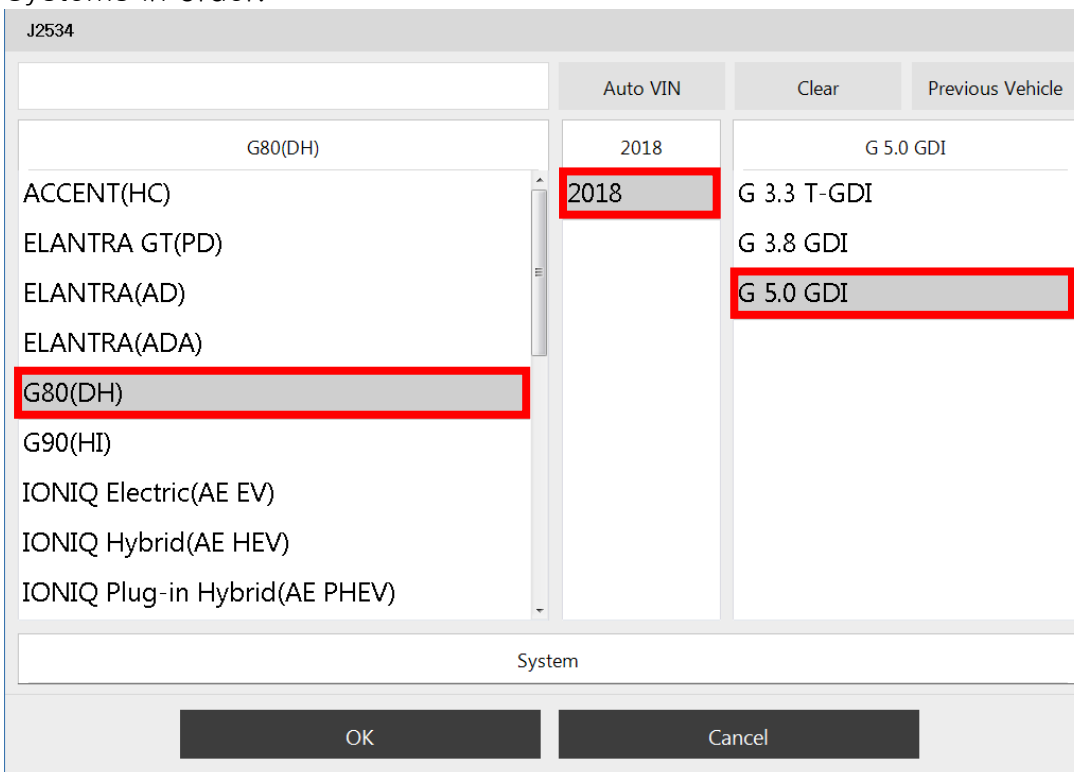
- Vehicle selection can be performed by 3 ways through the vehicle selection window.
  1. Click the Auto VIN button to select a vehicle
  2. Select model, year and engine in order.
  3. Click Previous Vehicle to select previous vehicle at the last.



- Auto VIN reads VIN from ECU, and loads the systems automatically.



- When selecting a vehicle manually, a user needs to choose Model, Year, Engine, and Systems in order.



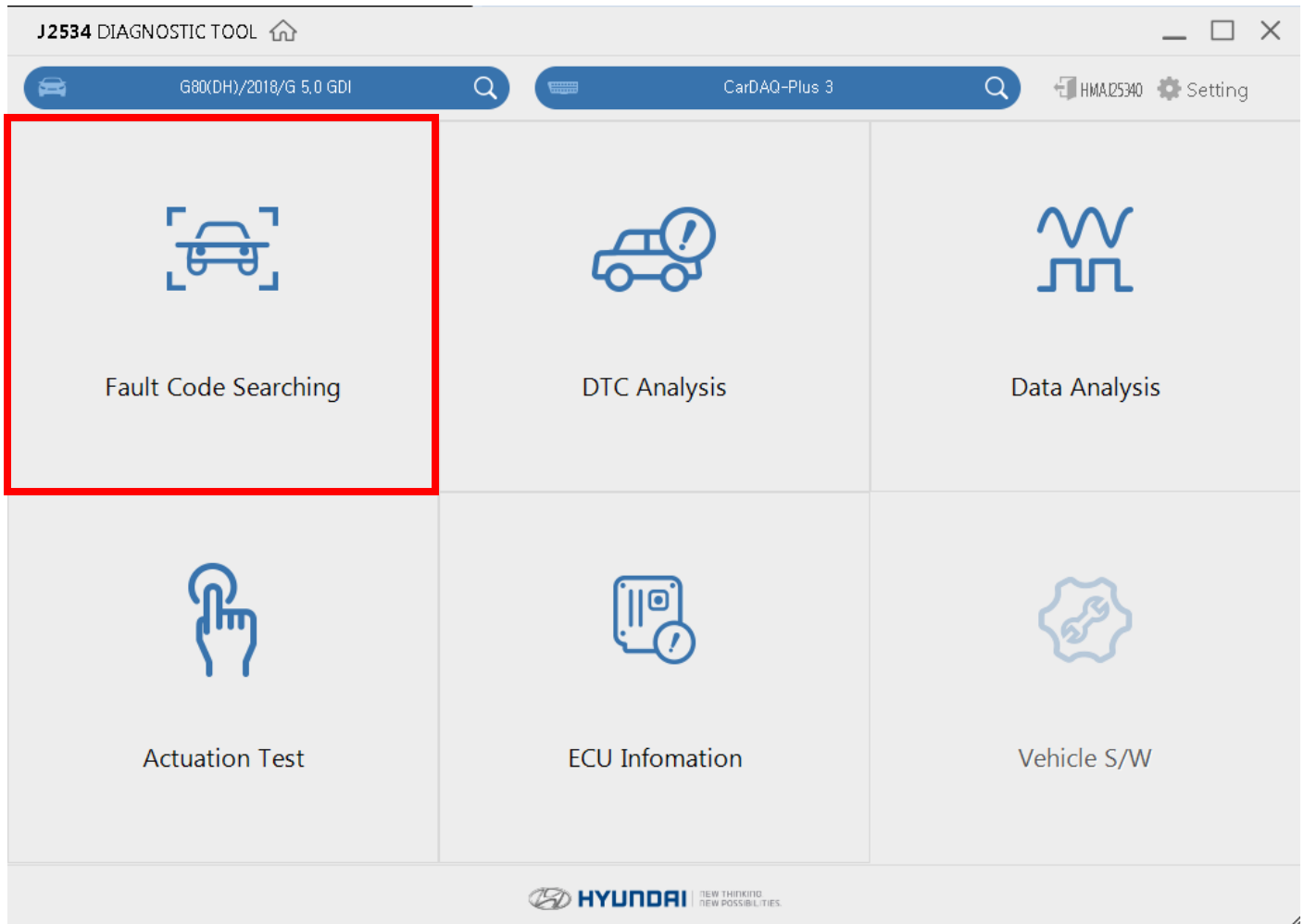


Fault Code Searching

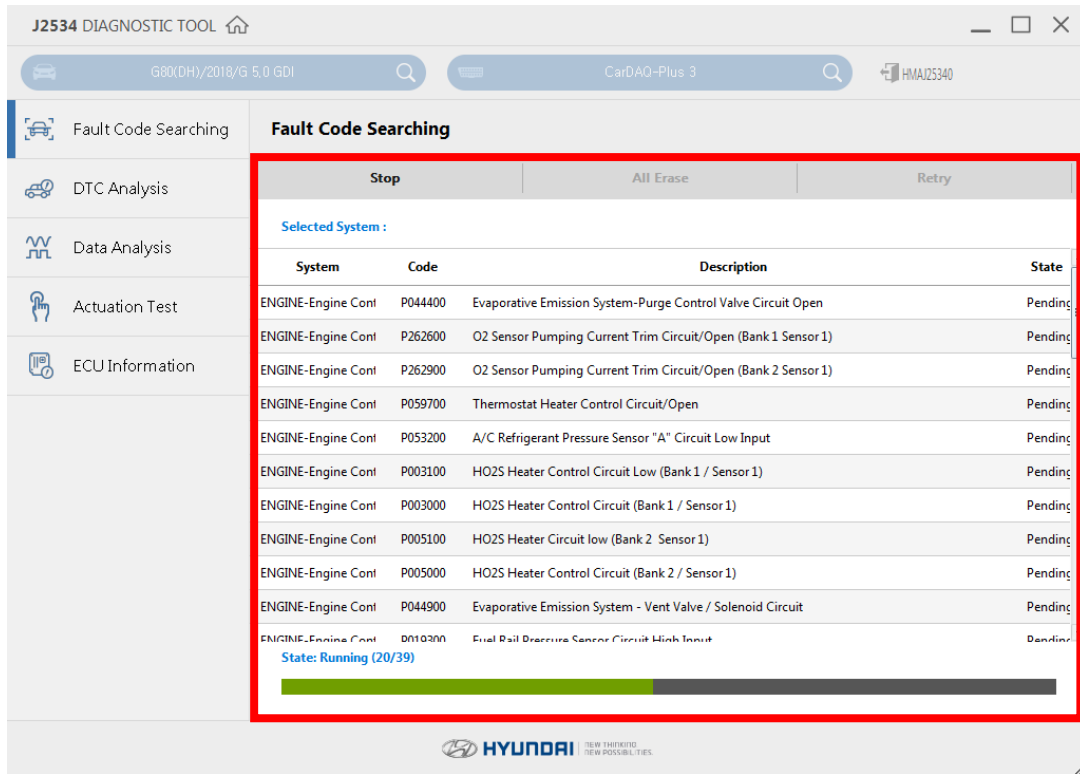
Fault Code Searching provides the diagnostic result of the vehicle by displaying DTC(Diagnostic Trouble Code) which are stored in a number of systems equipped on the vehicle.

## ■ Fault Code Searching

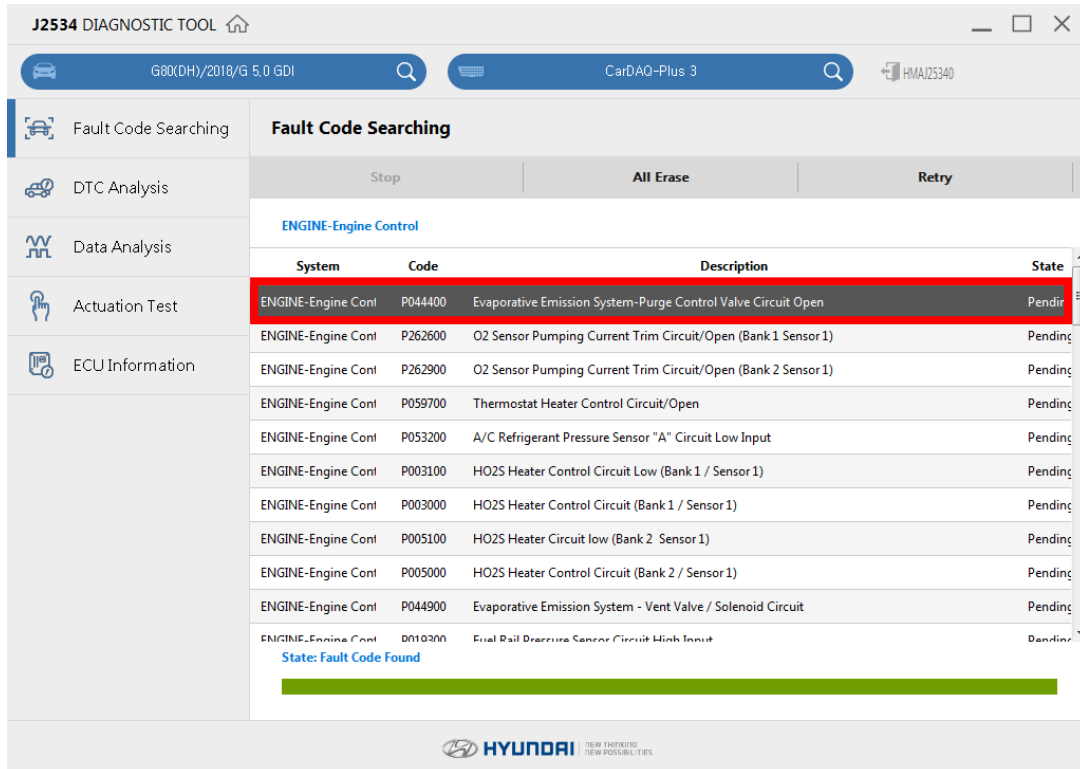
- After selecting 'Device' on the vehicle section screen, click 'Fault Code Searching' to use the function.



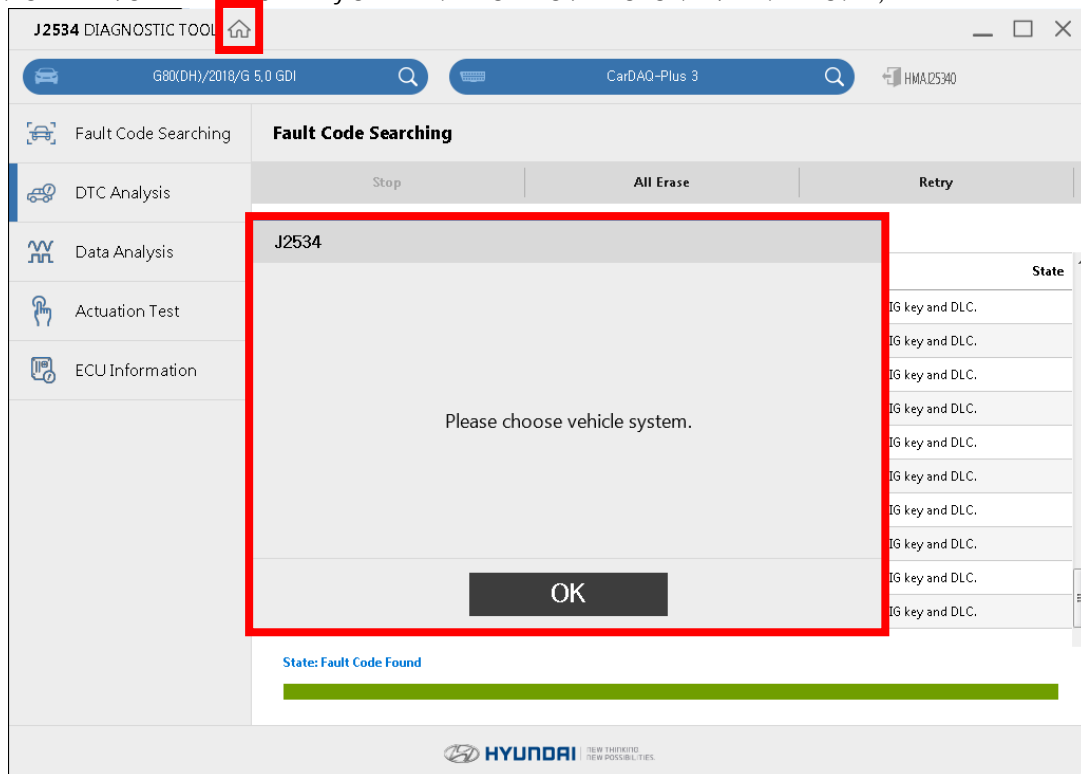
- The result of the selected vehicle appears to the user after performing diagnostic communication.



- When selecting the diagnostic trouble code, you can go to DTC Analysis, Data Analysis, Actuation Test, and ECU Information.



- If you don't select diagnostic trouble code, you are not able to move DTC Analysis, Data Analysis, Actuation Test, and ECU Information. Click the Home button, or select diagnostic trouble code if you want to move to other functions,



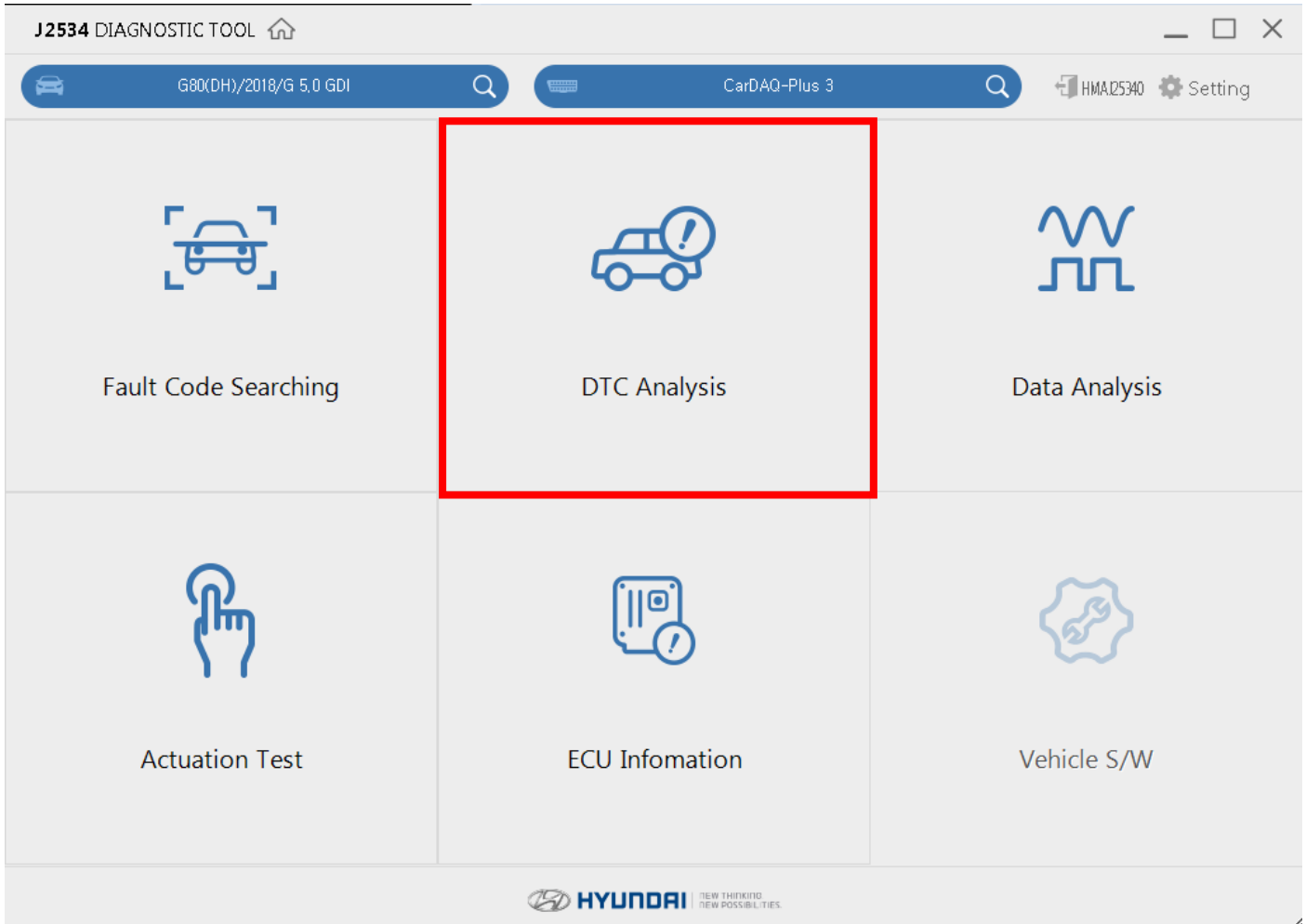


DTC Analysis

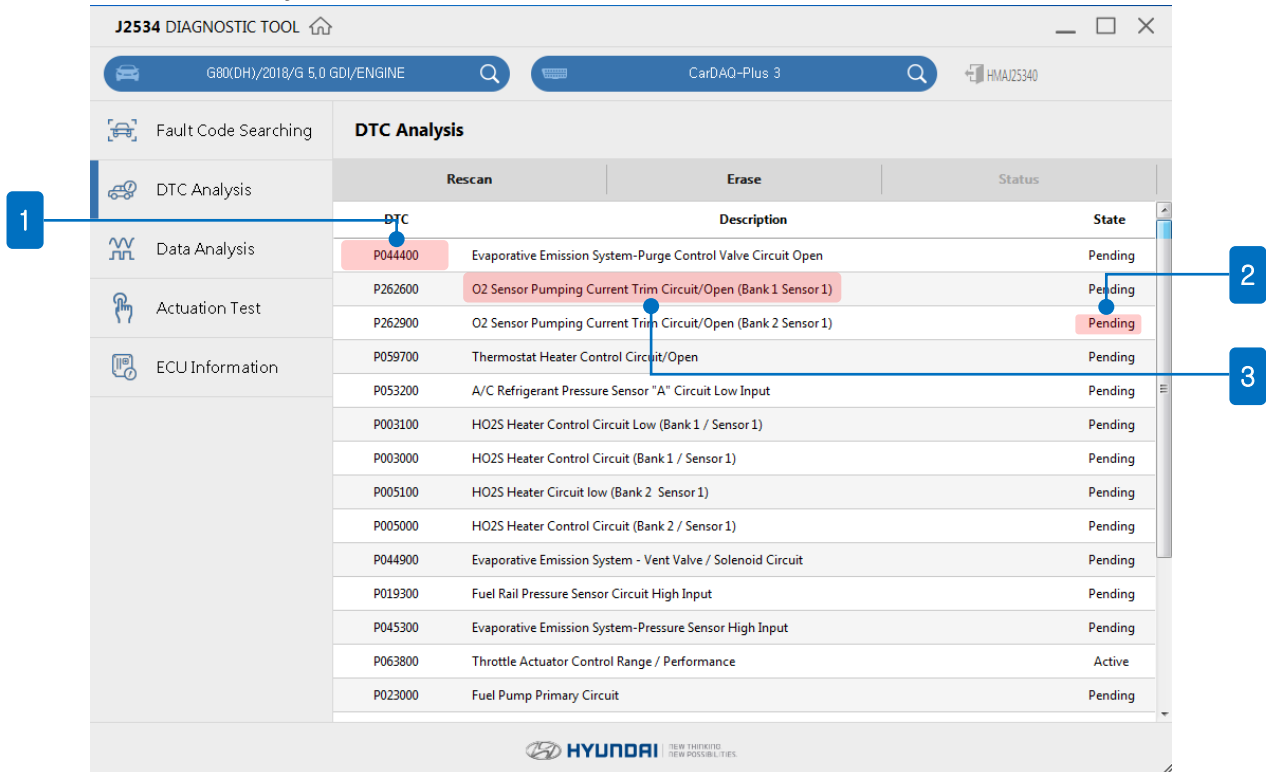
DTC Analysis search DTC stored in systems on the vehicle, and analysis the trouble code by detail information.

## DTC Analysis

- After selecting 'Device' on vehicle section screen, click 'DTC Analysis' to use the function.



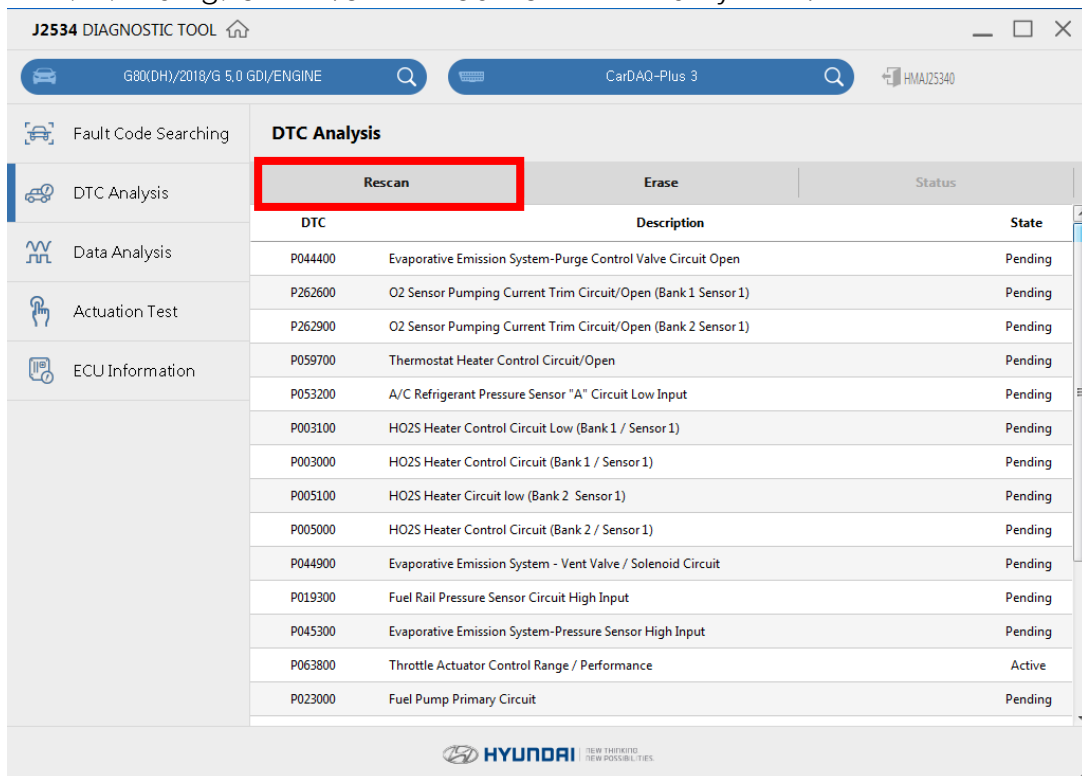
- Check DTC Analysis information



No	Icon	Description
1	DTC	Displays DTC saved in ECU.
2	State	Displays DTC status (Current, History) of ECU
3	Description	Displays DTC description of ECU.

- Rescan

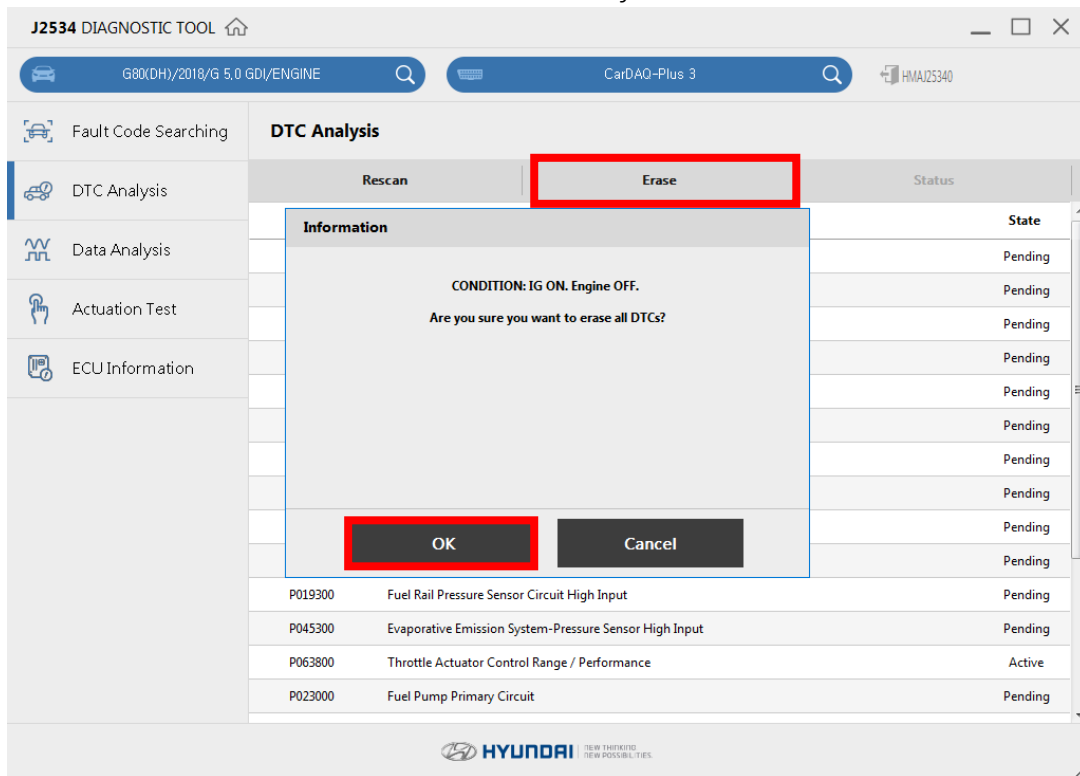
Re-scan the diagnostic trouble code of selected system.





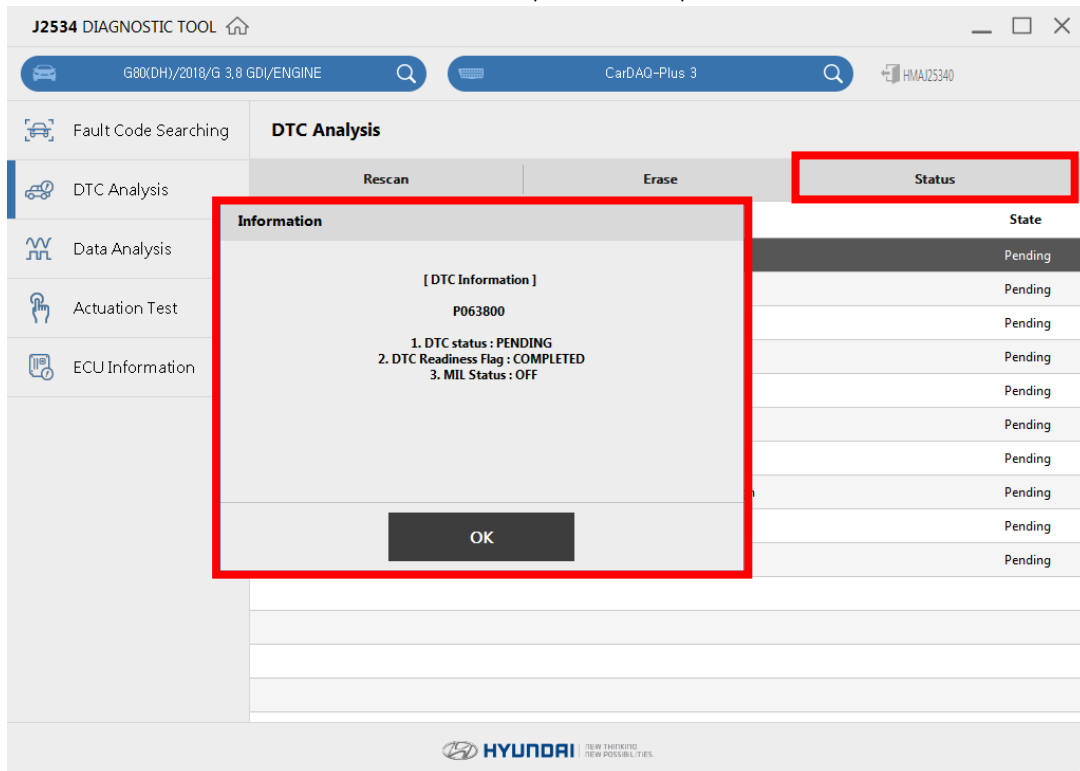
- Erase

Erase all DTCs which are found on current systems.



- Status

Check current DTC status with the simple description.



- Switch other diagnostic functions.

Diagnostic functions can be switched while the communication keeps between J2534 program and the vehicle.

- Fault Code Searching
- Data Analysis
- Actuation Test
- ECU Information

The screenshot shows the J2534 Diagnostic Tool interface. The top bar displays 'J2534 DIAGNOSTIC TOOL' and vehicle information: 'G80(DH)/2018/G 5.0 GDI/ENGINE' and 'CarDAQ-Plus 3'. The left sidebar menu is highlighted with a red box, containing the following options: Fault Code Searching, DTC Analysis, Data Analysis, Actuation Test, and ECU Information. The main area displays the 'DTC Analysis' screen with a table of DTCs.

Rescan	Erase	Status	DTC	Description	State
			P044400	Evaporative Emission System-Purge Control Valve Circuit Open	Pending
			P262600	O2 Sensor Pumping Current Trim Circuit/Open (Bank 1 Sensor 1)	Pending
			P262900	O2 Sensor Pumping Current Trim Circuit/Open (Bank 2 Sensor 1)	Pending
			P059700	Thermostat Heater Control Circuit/Open	Pending
			P053200	A/C Refrigerant Pressure Sensor "A" Circuit Low Input	Pending
			P003100	HO2S Heater Control Circuit Low (Bank 1 / Sensor 1)	Pending
			P003000	HO2S Heater Control Circuit (Bank 1 / Sensor 1)	Pending
			P005100	HO2S Heater Circuit low (Bank 2 / Sensor 1)	Pending
			P005000	HO2S Heater Control Circuit (Bank 2 / Sensor 1)	Pending
			P044900	Evaporative Emission System - Vent Valve / Solenoid Circuit	Pending
			P019300	Fuel Rail Pressure Sensor Circuit High Input	Pending
			P045300	Evaporative Emission System-Pressure Sensor High Input	Pending
			P063800	Throttle Actuator Control Range / Performance	Active
			P023000	Fuel Pump Primary Circuit	Pending

The Hyundai logo and slogan 'NEW THINKING. NEW POSSIBILITIES.' are visible at the bottom of the interface.

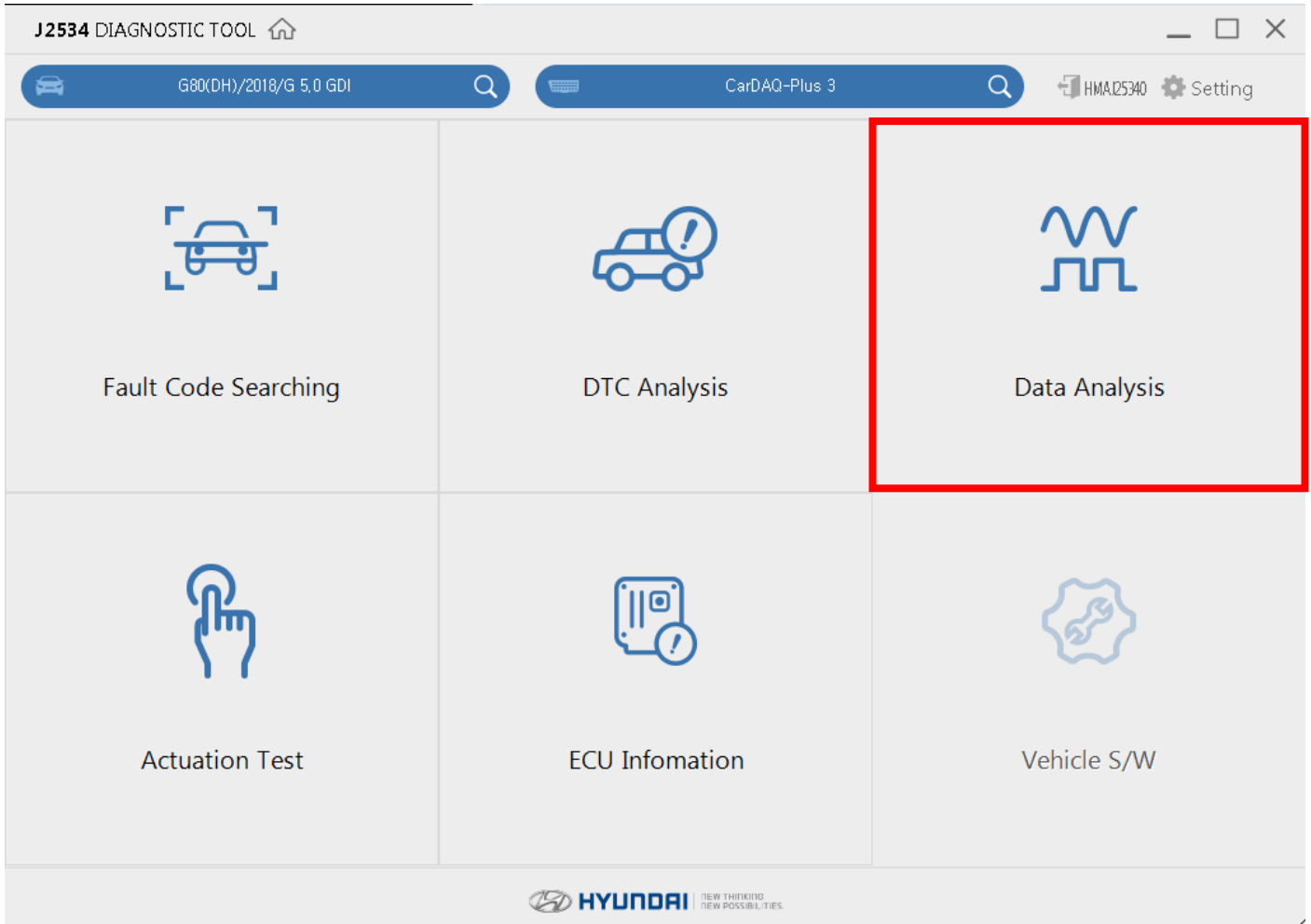


Data Analysis

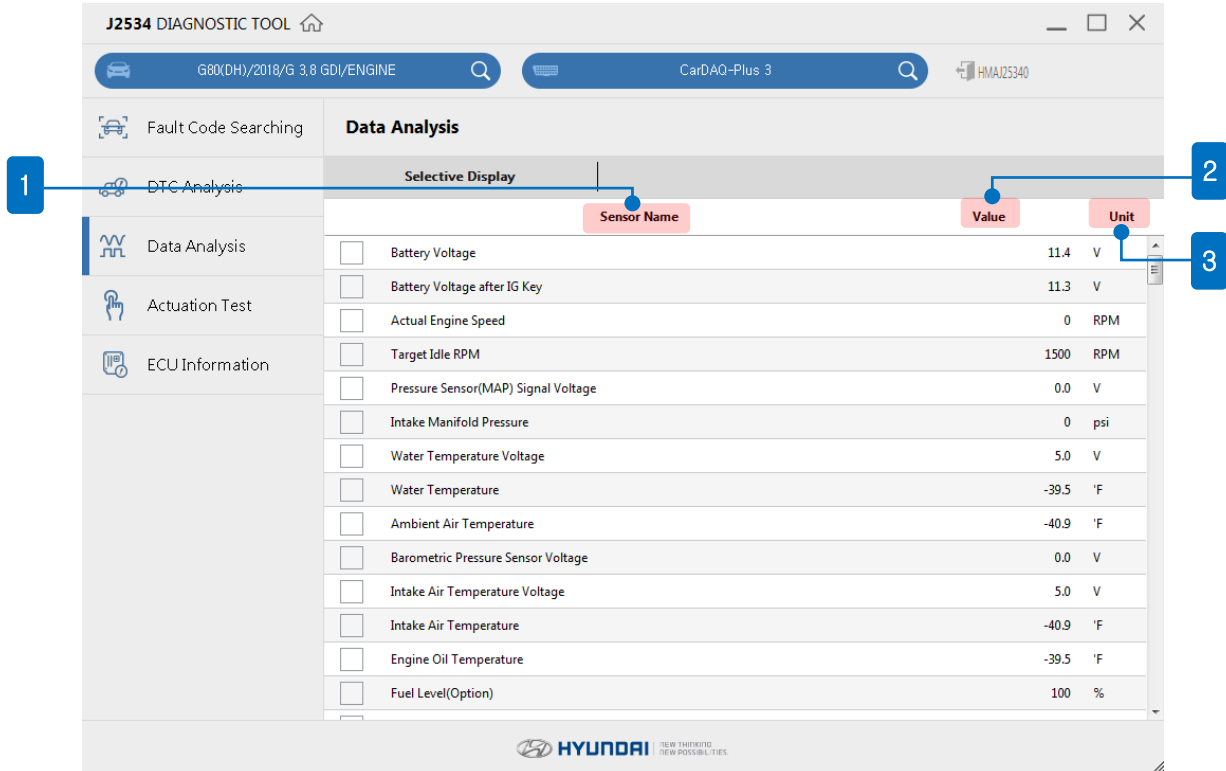
Data Analysis communicates with the ECU, and provide to check the operation status of sensors and actuators of the systems equipped on the vehicle.

## Data Analysis

- After selecting 'Device' on the vehicle section screen, click 'Data Analysis' to use the function.



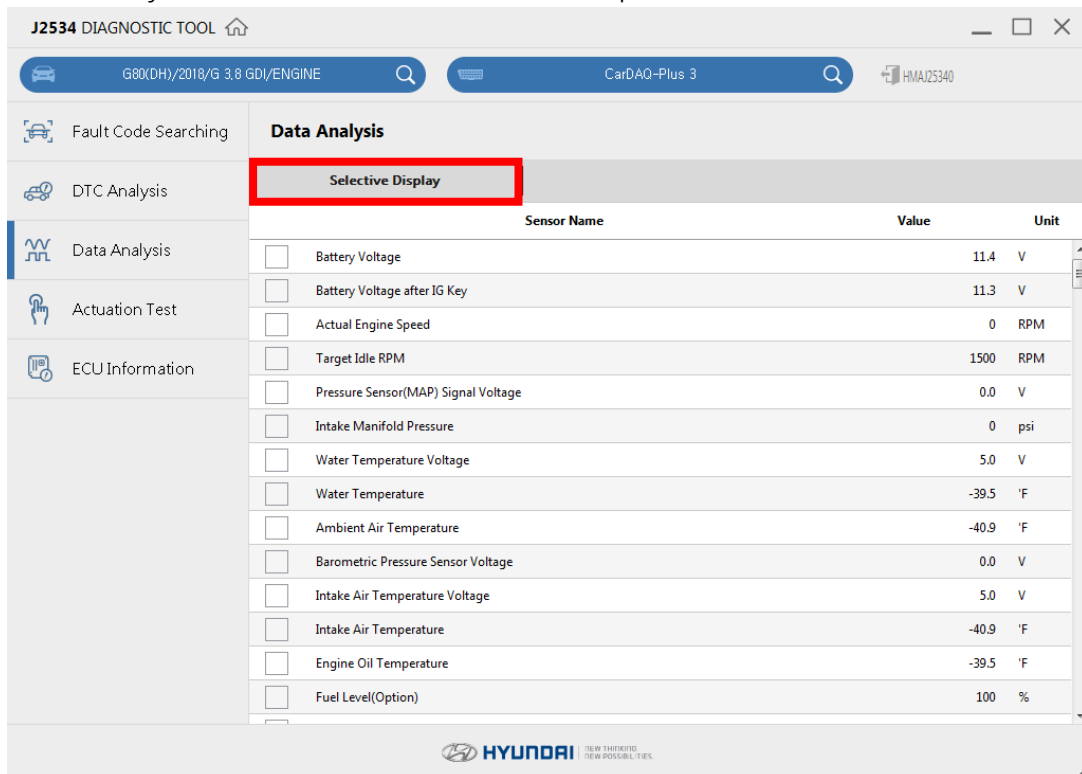
- Check the information of Data Analysis.



No	Description
1	Name of Sensor data
2	Value of Sensor data
3	Unit of Sensor data

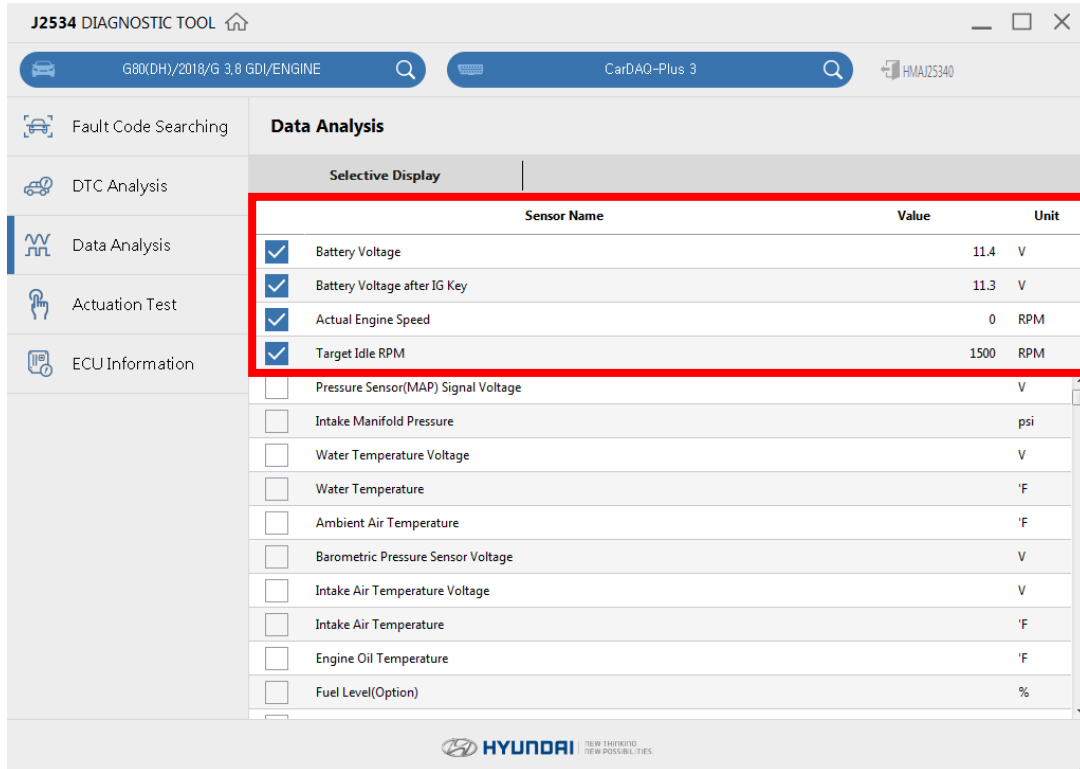
- Selective Display

Sensor data you need can be fixed at the top of the screen.



- Check/uncheck sensor data items

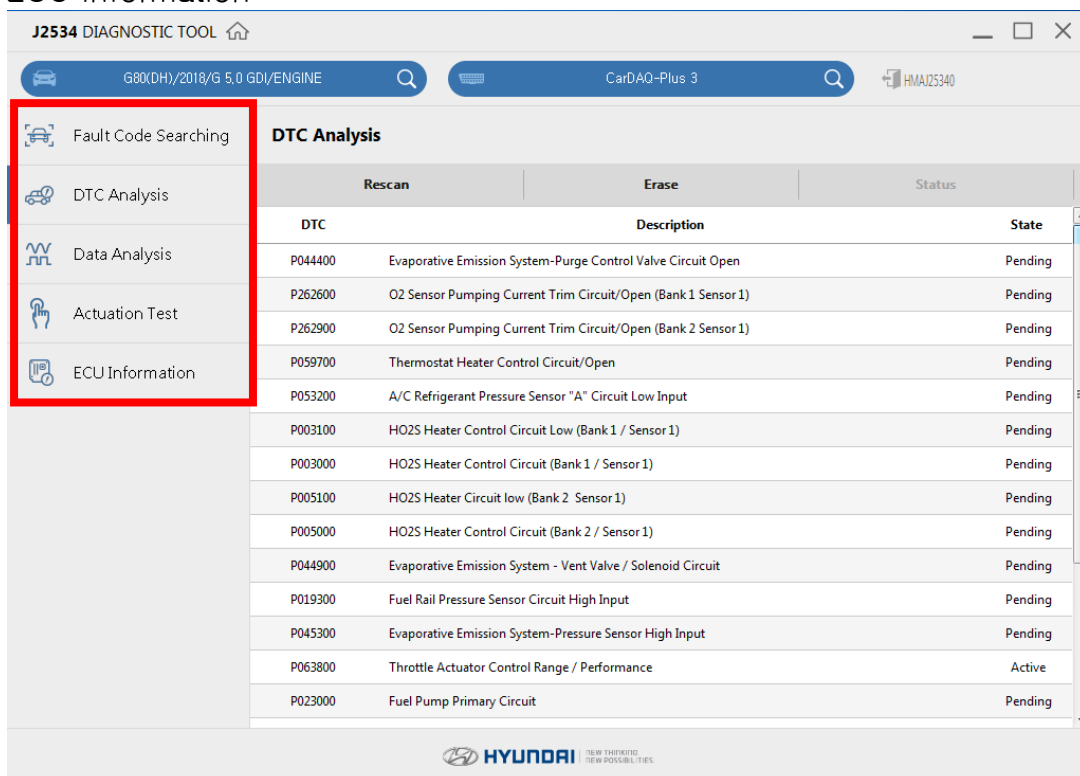
Blue check box is activated and fixed at the top if you select the sensor data item. If you want to turn back and uncheck, select the sensor data again.



- Switch other diagnostic functions.

Diagnostic functions can be switched while the communication keeps between J2534 program and the vehicle.

- Fault Code Searching
- Data Analysis
- Actuation Test
- ECU Information



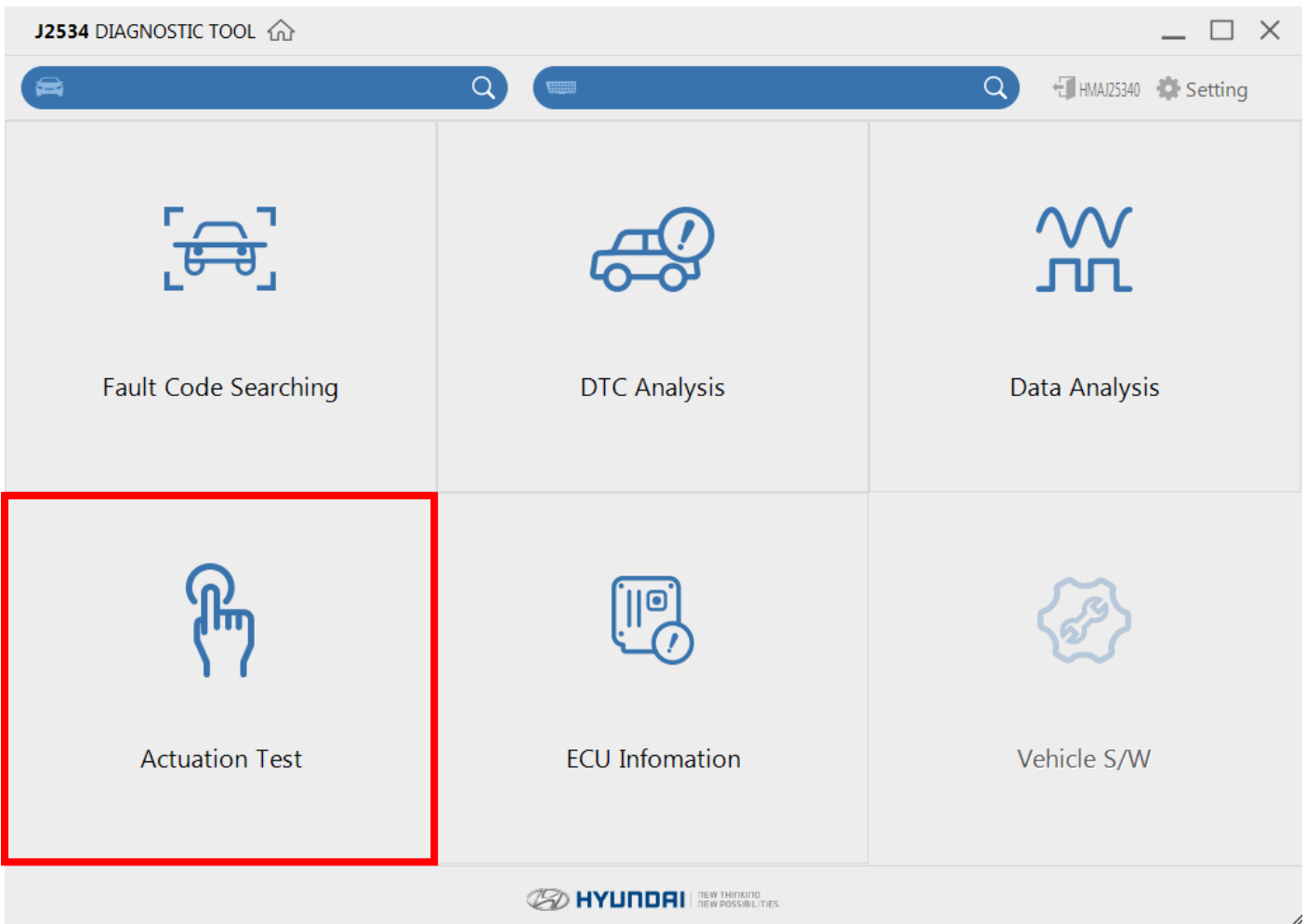


Actuation Test

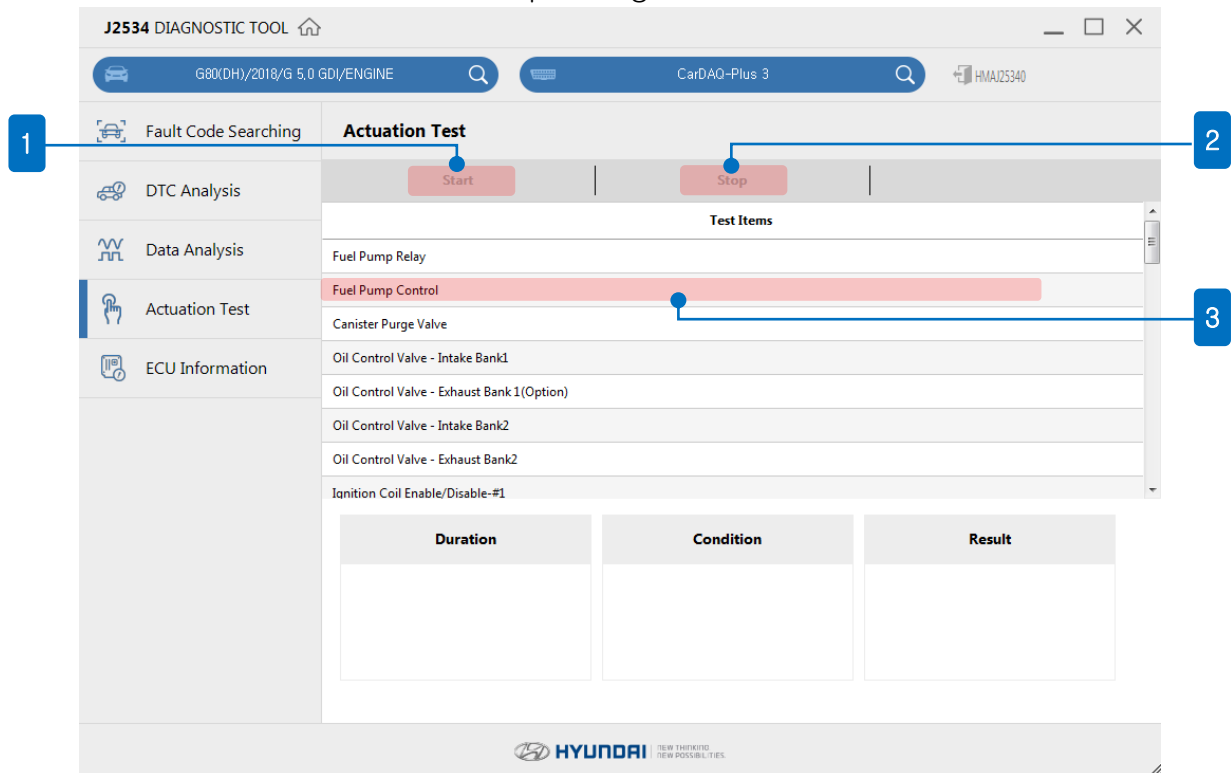
Actuation Test provides to control actuators of vehicle systems by controlling ECU, and to check whether there is an abnormality.

## Actuation Test

- After selecting 'Device' on the vehicle section screen, click 'Actuation Test' to use the function.



- Test items which should be supported by ECU appear with Duration, Condition, and Result.
- Test items can be different depending on ECU of the vehicle.



No	Icon	Description
1	Start	Start Actuation test.
2	Stop	Stop Actuation test.
3	Test Items	Select the sensor data on Actuation test.



If needed, Actuation Test can be stopped depending on the test items using by [Stop] button.

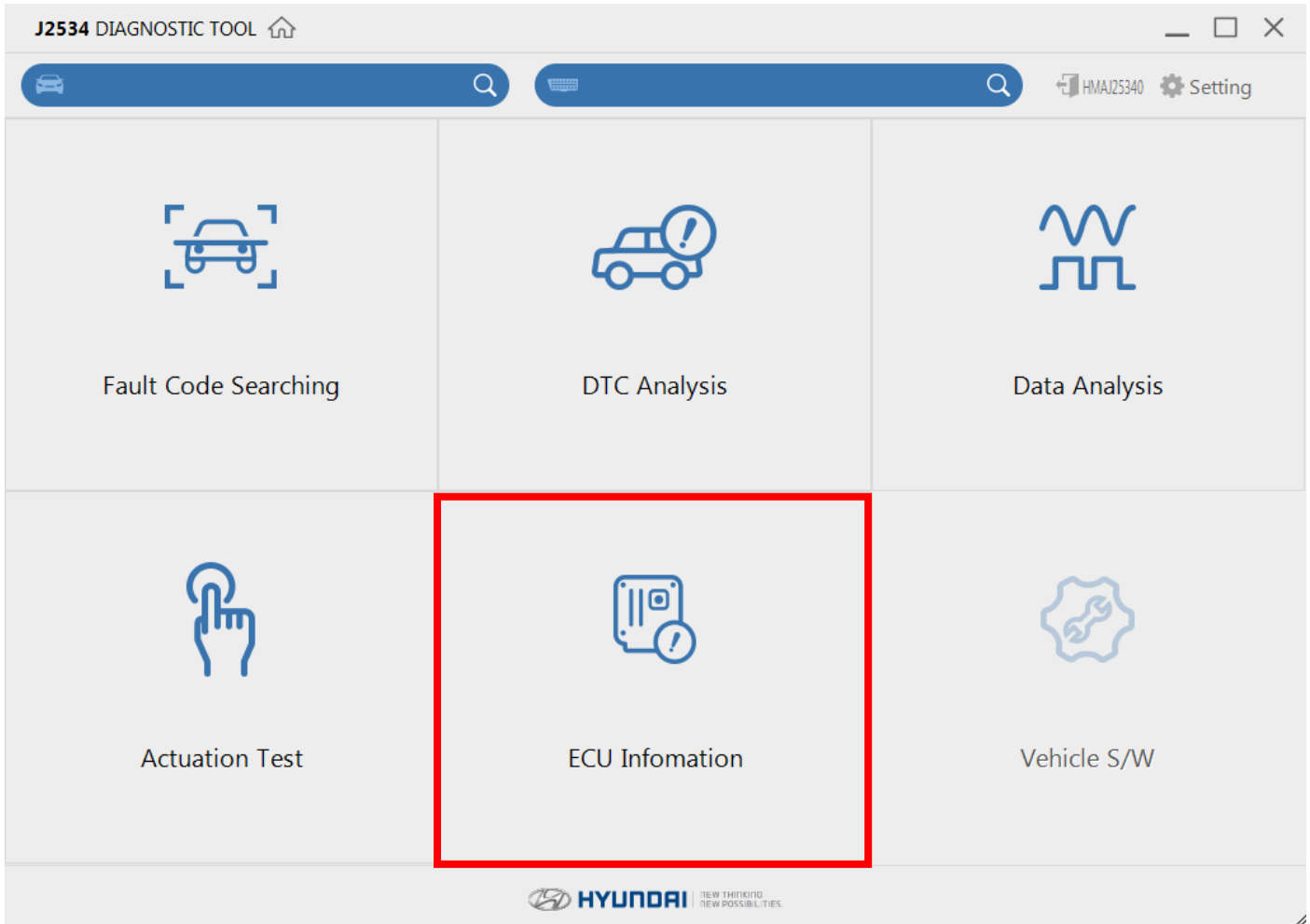


ECU Infomation

ECU(Electronic Control Unit) information provides reading specification of the systems equipped on the vehicle.

## ECU Infomation

- After selecting 'Device' on the vehicle section screen, click 'ECU information' to use the function.





- ECU information which you selected on the vehicle selection will display on the screen.

The screenshot displays the J2534 Diagnostic Tool interface. At the top, the title bar reads "J2534 DIAGNOSTIC TOOL" with a home icon. Below the title bar, there are two search bars: the first contains "G80(DH)/2018/G 5.0 GDI/ENGINE" and the second contains "CarDAQ-Plus 3". To the right of the second search bar is a user ID "HMAJ25340".

The main interface is divided into a left sidebar and a main content area. The sidebar contains the following menu items: "Fault Code Searching", "DTC Analysis", "Data Analysis", "Actuation Test", and "ECU Information" (which is currently selected and highlighted in blue). The main content area is titled "ECU Information" and displays a list of ECU parameters within a red-bordered box:

- CalibrationRepairShopCodeOrCalibrationEquipmentSerialNumber :
- Calibration Date : 00000000
- Boot S/W ID:
- Application S/W ID : 0000000000
- VIN :
- Vehicle Manufacturer ECU Hardware Number :GDP-KN0GFS1-E200
- System Supplier ECU Hardware Number :0261S14678
- System Supplier ECU S/W No. :DCAE03J3
- System Supplier ECU Software Version Number :
- repairShopCodeOrTesterSerialNumber :
- Programming Date :00000000

At the bottom of the interface, the Hyundai logo is visible with the slogan "HYUNDAI | NEW THINKING. NEW POSSIBILITIES."



Only single system can be communicated when you select a vehicle. The Information of specification is supported only if ECU(Electronic Control Unit) provides the information on the vehicle.