

Update Tech-2

Status	Subscription Name	Description	Actions
Expired 3/10/22 8:02 AM	GM Light Duty Global Diagnostics 2-GDS 2		Renew
Expired 15/10/22 1:59 PM	Service Programming Package		
Ends 19/10/22 9:15 AM	Global Diagnostic System (GDS2) + Tech2Win		Accept Extend

TLC Admin Console

Home - ACDelco Support

Get Ready to be a Techline Connect User!

The Techline Connect Application requires that your PC meets:
Windows 10 Professional, 8+ GB RAM and 100 GB free drive space OR review the Dealer Infrastructure Guidelines (DIG) for the Better/Best columns (DIG PDF).

Download the User Guide.

Review the 8-minute training video to see the benefits of Techline Connect.

Launch Techline Connect as admin

[Download Techline Connect](#) [Launch Techline Connect](#)

TLC Admin Console

Home - ACDelco Support

Get Ready to be a Techline Connect User!

The Techline Connect Application requires that your PC meets:
Windows 10 Professional, 8+ GB RAM and 100 GB free drive space OR review the Dealer Infrastructure Guidelines (DIG) for the Better/Best columns (DIG PDF).

Download the User Guide.

Review the 8-minute training video to see the benefits of Techline Connect.

Launch Techline Connect as admin

[Download Techline Connect](#) [Launch Techline Connect](#) [Login to Launch Techline Connect again](#)

TECHLINE CONNECT

Checking Lease...
Checking for Software Updates...

TECHLINE CONNECT

Registering component versions to server

Enter Standalone Mode [Login](#)

TECHLINE CONNECT

Vehicle Selection: Select Vehicle

[Connect Vehicle](#) Recent Vehicles

Manual Vehicle Selection

Input VIN

Year

Make

Model

File Options Windows Help

Tech2

32 Megabyte

Default Software: Please obtain the newest version from Tech2 Software Download.

Press [ENTER] to continue.

Software Version: 15.100

gm

VIN: NA

Select Vehicle

Connect Vehicle

DASHBOARD

GDS GDS2

Additional Tools [Tech2Win](#)

Support

Notifications 0

Tech2Win-Configurator

Please choose an option

Start Modify / View [Create new ...](#)

Please choose a configuration now

default [Clickstart](#)

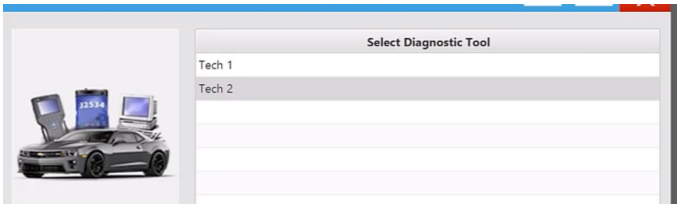
Select Vehicle Communication Interface

Select the interface you want to use:

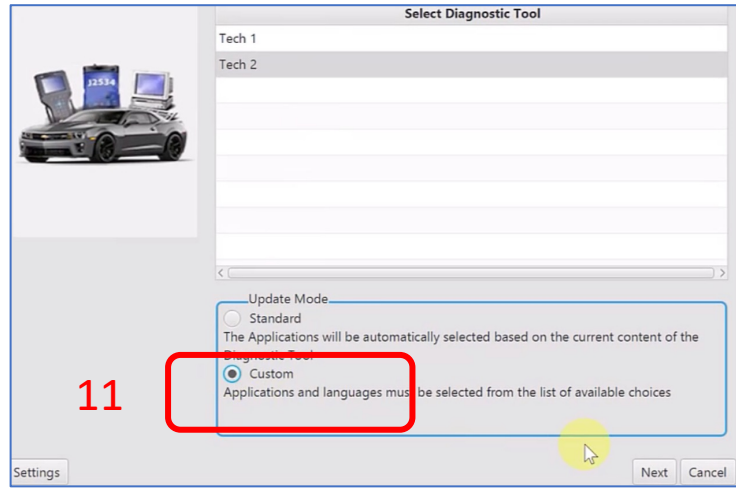
[Cancel](#) [Refresh](#) [OK](#)

Support [About Security](#)

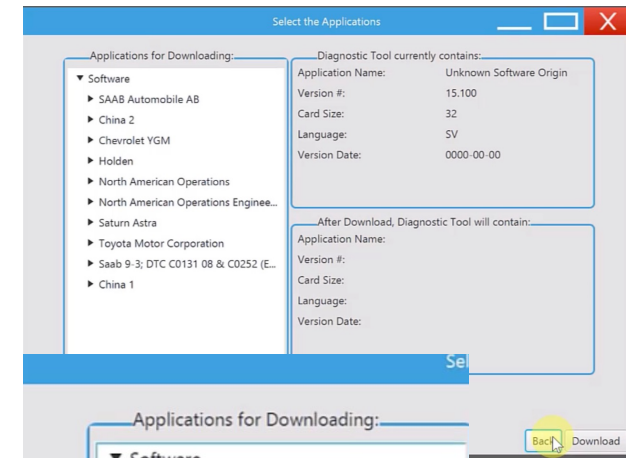
Notifications [Software Download](#)



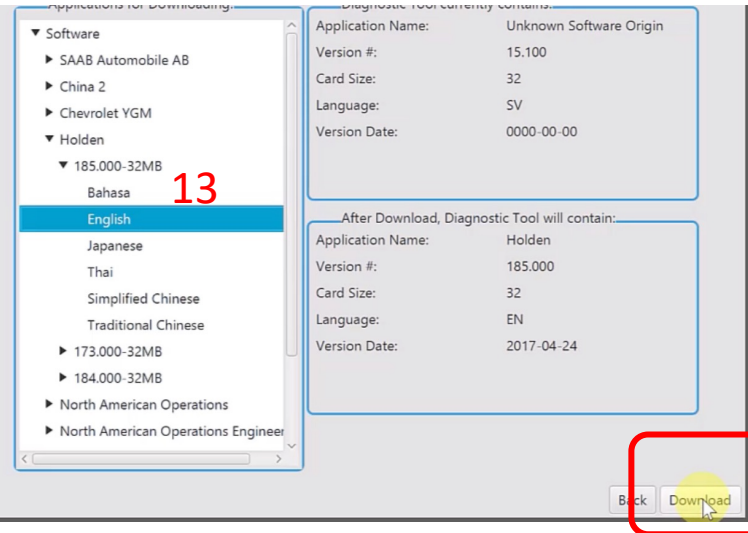
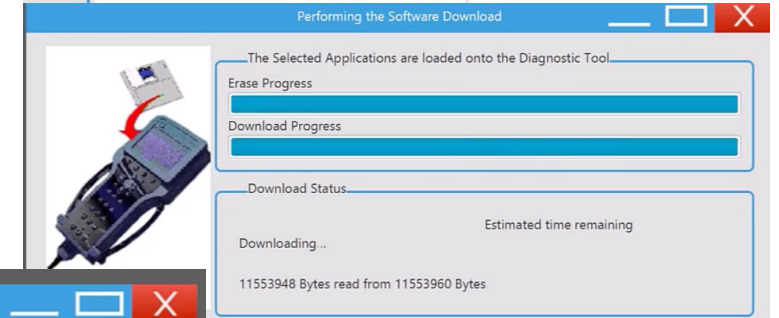
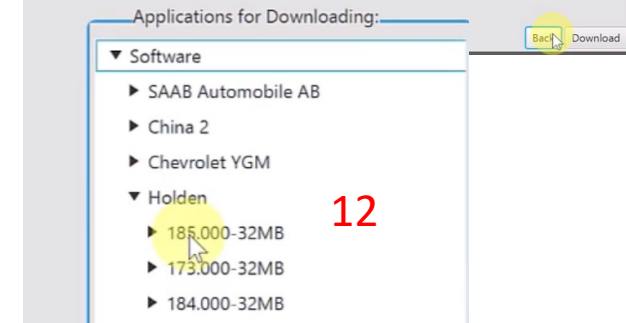
10



11



12



13

